



SAINT RAPHAEL THE ARCHANGEL

CATHOLIC CHURCH

DECEMBER 8, 2024 SECOND SUNDAY OF ADVENT




WELCOME!


VISIT OR CONTACT US


6047 Bishops Place
Saint Louis, MO 63109

314.352.8100
straphaelarchangel.org

Mon.-Thu. | 7:30am-4:00pm
Fri. | 7:30am-12:00pm

 @SRAtoday

 @SRAtoday

 straphaelarchangel

SCHOOL INFORMATION

6000 Jamieson Avenue
Saint Louis, MO 63109

314.352.9474 | 314.351.7477 (Fax)

Mon.-Fri. | 7:00am-3:00pm

MASS SCHEDULE

WEEKEND MASS

Saturday | 7:00am, 4:30pm
Sunday | 9:00am

WEEKDAY MASS

Mon. - Fri. | 8:00am

CONFESSION

Monday - Friday | 7:30am
Saturday | 3:30pm
Other | By Appointment

CHURCH OPEN FOR PRIVATE PRAYER

Mon.-Fri. | 8:00am-2:00pm
Saturday | 8:00am-4:30pm

second sunday of ADVENT



PARISH CLERGY

Fr. Thomas Molini, Pastor
thomasmolini@archstl.org

Fr. Robert Lawson, Associate Pastor
robertlawson@archstl.org

LAY LEADERSHIP

Brian McCarthy, Pastoral Council
brianmccarthy@peaknet.net

Liz Murphey, School Board
schoolboard@straphaelarchangel.org

Joseph Cyr, Finance Council
314.335.7322

Jacqueline Ilg, HSA President
hsa@straphaelarchangel.org

PARISH STAFF

Ray and Mary Anne Braun, Music
Ministers
Braun@straphaelarchangel.org

Diane Halbert, Parish Office
Manager
halbert@straphaelarchangel.org

Mickey Janos, Admn. Assistant
janos@straphaelarchangel.org

Pam Hager, Parish Support Staff/
Child Safety Coordinator
hager@straphaelarchangel.org

Robert Schlueter, Maintenance

Julie Hayes, School Principal
hayes@straphaelarchangel.org

Kathy Shaver, School Secretary
secretary@straphaelarchangel.org

Qi Franz, Cafeteria Manager
franz@straphaelarchangel.org

Sarah Henderson, Youth Minister
hendersons@stgabrielstl.org

DECEMBER 8, 2024 SECOND SUNDAY OF ADVENT

Fr. Molini's Notes

Second Sunday of Advent

"Jerusalem, take off your robe of mourning and misery; put on the splendor of glory from God forever: wrapped in the cloak of justice from God..."

Our first reading this Sunday begins with the hopeful message of God's redemption of His people. We are to be clothed in splendor and know the justice of God. This promise leads us to the introduction of St. John the Baptist in the Gospel, the prophet who calls us all to redemption through the forgiveness of sins. John's "voice" echoes down to this day, calling us to rely upon the justice of God found in forgiveness and reconciliation.

The season of Advent speaks to the mercy of God found in the Sacrament of Reconciliation and the forgiveness of sins. Confessions are heard every weekday at 7:30 am and on Saturdays before the evening Mass. Take advantage of this seasonal call to holiness and put on the splendor of glory.

The Immaculate Conception

Each year the Church honors our Blessed Mother and her Immaculate Conception with a holy day. Since December 8 falls on a Sunday, the feast moves to Monday, December 9, and remains a holy day to honor Mary, the patron saint of our United States.

Mass for Monday, December 9, the Feast of the Immaculate Conception, will be at 8:00am. Masses at St. Gabriel will be at 6:00am, 8:00am, 12 noon, and 6:00pm.

Christmas Novena

A tradition of the season is the Christmas Novena, with a series of prayers, canticles, and songs celebrating the coming of Christmas. For several nights before Christmas, we will continue this ancient custom at St. Gabriel and you are invited to participate. From December 17 - 23 at 7:00pm, join us in prayer to prepare for the birth of Christ.



Sunday, Dec. 8

9:00am

Ernest Winkelmann

Monday, Dec. 9

8:00am

Liddy Family

Tuesday, Dec. 10

8:00am

Jost Family

Wednesday, Dec. 11

8:00am

Kris Schneidewind

Thursday, Dec. 12

8:00am

Elsa Straub

Friday, Dec. 13

8:00am

Don Deachan

Saturday, Dec. 14

7:00am

Kimling Family

4:30pm

Dan Harbaugh

Sunday, Dec. 15

9:00am

Joseph A. Walsh, Jr.

This weekend's Sacred
Scripture readings:

Sunday, December 8:

Ritual Song: No. 1095

Pray Together: Page 27



St. Vincent de Paul

In the Gospel today, we hear that the rough ways should be made smooth. When we meet our neighbors in need, they are experiencing a rough time in their lives. Donations make it possible for us to provide essentials such as sheets, warm blankets, cups and plates, and especially lamps. At times we are able to provide a small radio to break the silence and to provide some listening enjoyment. These small things go a long way to smooth the rough road. Thank you for always making this possible.

“And this is my prayer: that your love may increase ever more and more in knowledge and every kind of perception, to discern what is of value...” Philippians 1:9-10

During the Christmas shopping season, it is easy to get caught up in the frenzy of buying gifts. But, is that “gift” truly an expression of your love for the other person? Or, are you just fulfilling your “obligation” to give something? To grow in friendship with others, you need to spend time with them and learn what is of value to them. Maybe this year, buy less “stuff” and spend more time with those you love.

Your Contributions to God and Parish

Nov. 24, 2024 (Envelopes Used)	This Week	Year-to-Date
Regular Env. (33)	\$ 3,217	\$ 89,231
Loose Money	\$ 1,827	\$ 38,041
School Support	\$ 425	\$ 3,755
Building Fund	\$ 20	\$ 3,270
Holy Days	\$ 0	\$ 1,861
Online Giving (48)	\$ 2,778	\$ 60,645
Tithing	(\$ 30)	
Seminary	(\$ 200)	
Christmas	\$ 100	
Retired Religious	(\$ 65)	
Candle Money	\$ 20	
Human Devpt.	(\$ 65)	
Grand Total	\$ 8,747	
Total for Parish	\$ 8,387	\$ 198,834
Amount Needed	\$ 10,000	\$ 210,000
Difference	<u>(\$ 1,613)</u>	<u>(\$ 11,166)</u>
FYE 2024		<u>(\$ 17,741)</u>

Dec. 1, 2024 (Envelopes Used)	This Week	Year-to-Date
Regular Env. (30)	\$ 5,012	\$ 94,243
Loose Money	\$ 0	\$ 38,041
School Support	\$ 130	\$ 3,880
Building Fund	\$ 235	\$ 3,5050
Holy Days	\$ 125	\$ 1,986
Online Giving (49)	\$ 2,958	\$ 63,603
Christmas Flowers	\$ 295	
Altar Flowers	\$ 25	
Kenrick Seminary	(\$ 75)	
Retired Religious	(\$ 75)	
Candle Money	\$ 10	
Grand Total	\$ 8,940	
Total for Parish	\$ 8,790	\$ 206,624
Amount Needed	\$ 10,000	\$ 210,000
Difference	<u>(\$ 1,210)</u>	<u>(\$ 12,376)</u>
FYE 2024		<u>(\$ 17,741)</u>



ALTAR SERVERS

SERVERS FOR DECEMBER 9 - 15, 2024

Monday, December 9

8:00am Hannah Kratky Olivia Wegman
William Schneeberger

Tuesday, December 10

8:00am Emma Rooney Kate Ilg
Frank Koziacki

Wednesday, December 11

8:00am Henry Dirnbeck Mollie Dirnbeck
Corinne Pendry

Thursday, December 12

8:00am Emma Peters Isa Hogrebe
Lucca LoBello

Friday, December 13

8:00am Magdalena Niemira Jake Anstey
Mark Boeckmann

Saturday, December 14

4:30pm Harper Bradshaw Maizy Magee
Sophia Bradshaw

Sunday, December 15

9:00am Francie Berry Elle Anstey
Lucas Feldman

LECTORS/MINISTERS FOR THE WEEKEND OF DECEMBER 14 - 15

LECTORS

4:30pm Kevin Liddy
9:00am Dennis Matreci

Extraordinary Ministers

Mary Steck Heather Hays
Kevin Liddy Linda Saracino
George Kerry Barb Cramer

UPCOMING EVENTS

Monday, December 9

8:00am Church Mass
6:00pm Cafeteria 3rd Gr. Girl Scouts
6:30pm Parish Off. Pastoral Council

Tuesday, December 10

8:00am Church Mass
3:15pm Cafeteria 4th Gr. Girl Scouts
6:30pm School HSA

Wednesday, December 11

7:30am Church Rosary
8:00am Church Mass
3:30pm Cafeteria 6th Gr. Girl Scouts
7:00pm Cafeteria Scout Meeting
8:30pm Gym Old Man Basketball

Thursday, December 12

8:00am Church Mass
2:00pm Cafeteria Dance Class
6:30pm Gym Christmas Program

Friday, December 13

7:30am Church Rosary
8:00am Church Mass

Saturday, December 14

7:00am Church Mass
8:00am Church Music Ministry Rehearsal
3:30pm Cafeteria Girl Scouts Caroling Party
4:30pm Church Mass

Sunday, December 15

9:00am Church Mass

DAILY READINGS

Sunday	Bar 5:1-9/Ps 126:1-2, 2-3, 4-5, 6 (3)/ Phil 1:4-6, 8-11/Lk 3:1-6
Monday	Gn 3:9-15, 20/Ps 98:1, 2-3ab, 3cd-4/ Eph 1:3-6, 11-12/Lk 1:26-38
Tuesday	Is 40:1-11/Ps 96:1-2, 3 and 10ac, 11- 12, 13/Mt 18:12-14
Wednesday	Is 40:25-31/Ps 103:1-2, 3-4, 8 and 10/ Mt 11:28-30
Thursday	Zec 2:14-17 or Rv 11:19a; 12:1-6a, 10ab/Jdt 13:18bcde, 19/Lk 1:26-38 or Lk 1:39-47
Friday	Is 48:17-19/Ps 1:1-2, 3, 4 and 6/Mt 11:16-19
Saturday	Sir 48:1-4, 9-11/Ps 80:2ac and 3b, 15- 16, 18-19/Mt 17:9a, 10-13
Next Sunday	Zep 3:14-18a/Is 12:2-3, 4, 5-6 (6)/Phil 4:4-7/Lk 3:10-18

St. Raphael Advent Angel Giving Tree

Our St. Vincent De Paul Conference is sponsoring the Advent Angel Giving Tree, that benefits St. Peter & Paul Community Services. P&P offers various services to those who are unhoused, many of whom are living with mental illness, addiction, or long-term medical conditions. They offer transitional housing, employment opportunities, and other programs to support the goal of living independently.

Our parish will provide gifts for residents of the Supportive Housing program, Garfield Place Apartments. GPA provides clients with a permanent place to stay while also providing supportive services, including a nurse, occupational therapist, and educational classes on topics such as financial literacy and healthy eating. In addition, we will provide gifts to participants in the Positive Directions programs who are living with HIV. Positive Directions helps to provide resources to keep people healthy and housed.



If you are interested in participating, please return your gifts NO LATER THAN SUNDAY, DECEMBER 15, at the 9:00am Mass. DO NOT wrap your gifts- but DO attach the tag to the gift so we can be sure it gets to the correct person.

We are grateful for your continued generosity, allowing us to provide needed support to this organization that is working hard to improve and change lives for the better. Thank you to all who are able to participate in this Advent Season of giving to those in need.

Mass Intentions

Mass intentions are available in the parish office. Please call the office or stop by Monday through Thursday, 7:30am until 4:00pm, and Friday 7:30am until noon, with your Special Intention or Repose of the Soul intention requests. The suggested offering is \$10 per Mass intention. If needed, you can pick up a card to send to the family when you drop off your offering.

New and Expectant Parent Network (N.E.X.T.)

The SRA New and Expectant Parent Network (N.E.X.T.) exists to support parents who are expecting or have recently given birth to or lost a child. The Network is always willing to accept new members and referrals or requests for our support. This includes meal delivery for about four to six weeks, prayers, and any baby supplies needed for the family. We are also in contact with our sister parish, Most Holy Trinity, to offer the same support to members in need at that parish. You may contact N.E.X.T. at nextministry@straphaelarchangel.org. Thank you.

LARGE-PRINT MISSALETTE

The new, large-print edition of the *Pray Together* missalette for December 1, 2024, through April 12, 2025, is now available. If you would like one, please stop by the parish office to pick one up. The office hours are Monday - Thursday from 7:30am until 4:00pm and Friday from 7:30am until noon.



JOIN US!

Every third Thursday in the cafeteria

SERVICE • COMMUNITY • FELLOWSHIP

The SRA Ladies' Club is continually adding new members and looking for ideas to support the school, the parish, and each other. Come as you are, and stay as long, or as little as you would like for a meeting, food, drinks, and friendship. We have multiple events throughout the year, including the Uniform Exchange, Fall Mum Sale, Christmas Wreath Sale, and more.

Our two largest fundraisers are Vendor Fair and Quarter Auction. These events raise money to sponsor funds for teacher appreciation, school needs, parish needs, Girl Scouts, class trips, Prayer Shawl Mission, and other SRA needs.

Save the Dates:



12/19- Christmas Pot Luck, Gift Exchange and President/Treasurer Elections 7p

For more information, contact ladies@straphaelarchangel.org or Krissy Sullivan at 314-608-9983.

Protecting God's Children

Did you know that all employees and volunteers in the schools and parishes of the Archdiocese of St. Louis are required to be in compliance with the Safe Environment Program to help prevent the abuse of a minor or vulnerable adult? Those who work with or near minors or vulnerable adults are required to: (1) attend a Protecting God's Children workshop; (2) complete a national criminal background screening and agree to regular updates; and (3) commit to the Archdiocese's Code of Ethical Conduct for Clergy, Employees, and Volunteers Working in Ministry policy. Please contact the parish office to complete these compliance efforts. Call 314.352.8100 for details and to sign up for a PGC workshop; or email hager@straphaelarchangel.org. Thank you.

WINTER OUTREACH - A MINISTRY OF MERCY

Encouraged by our Catholic Social Teachings, "Option for the Poor and Vulnerable," many parish communities are committed to making St. Louis Winter Outreach a faith-filled Ministry of Mercy. "As long as you did it to one of these the least of my brethren, you did it to me." MT 25:31-46

As winter approaches, our homeless "brethren" will spend cold days and nights on the streets of St. Louis. In an effort to give them some comfort, we are asking for help in providing meals to an overflow shelter.

DATES: SATURDAYS (1:00pm Dropoff)

January 11

February 8

Please consider joining our Ministry of Mercy by providing one or more of the following:

9x13" Casserole: meat, fish, veggie, or breakfast

Cookies, cupcakes, breads: (12 to 24 servings)

Prepared food should be baked, frozen, wrapped, and marked. Donations are to be dropped off at Our Lady of Sorrows parking lot at 1:00pm. If needed, other arrangements can be made. For more information or if you would like to share a dish, please contact Mary Ellen Mueller: 314.374.1712 or email maryem@brick.net.

Infant Baptism

Baptism is the first Sacrament of Christian Initiation. For a child to be baptized at St. Raphael, parents must be registered and practicing Catholics. Parents are expected to participate in a Baptismal Preparation Class. The class is held on the first Monday of each month at 7:30pm in the rectory lower level of St. Gabriel the Archangel. Please call the St. Gabriel parish office at 314.353.6303 to register for the class, or contact the St. Raphael parish office at 314.352.8100.

Prayer Network

Our prayer network continues its quiet work of praying for our parishioners who are ill, recovering from illness, and for special intentions as well. We also invite you to remember these petitions daily in your prayers. If you are interested in having an intention added to the prayer chain or to receive the list of intentions, please contact the parish office.

Our Parish Mission Statement

We, the parish of Saint Raphael the Archangel, celebrate Jesus as the center of our life. Through our active participation in the Eucharist, we strive to recognize Jesus in our daily lives and the lives of others. Our commitment is to grow as a parish family, and live this through our religious, educational, social, and civic involvements, witnessing to all, our faith in God the Father, Son, and Holy Spirit.

Auction Donation Blitz and Blues Raffle!

**Save the Date: 2025 Black and Gold Auction is Saturday, February 15, 2025!
Please consider donating to the Auction when holiday shopping!**



**Donations brought to the parish office before New Years Day will be entered into a drawing to win four Blues tickets donated by a friend of SRA!
(Mutually agreeable date)**

Check us out at:

“St. Raphael the Archangel Black and Gold Auction”



Donation dropoff at parish office (courtyard entrance) - 314.352.8100:
Monday-Thursday 7:30am – 4:00pm & Friday 7:30am – 12:00pm
Please fill out the donation form and raffle ticket form below for any donated items
Forms are available in the parish office
Questions: contact Mark Pfeiffer - auktion.st.raphael@gmail.com

Donation Blitz – Blues Raffle Ticket

(Please also submit “Donation Form”)

Name: _____









Email: _____

Phone: _____

Item Donated: _____

Value: _____



	St. Raphael the Archangel Black and Gold Dinner Auction Saturday, February 15, 2025	50/50 Raffle Ticket \$20 per ticket or sheet of 8 for \$125	Name: _____ Phone #: _____ Address: _____
	Drawing will be held during our live auction!		*Ticket sales will end at 7p on 2/15/2024.* *Need not be present to win*
	St. Raphael the Archangel Black and Gold Dinner Auction Saturday, February 15, 2025	50/50 Raffle Ticket \$20 per ticket or sheet of 8 for \$125	Name: _____ Phone #: _____ Address: _____
	Drawing will be held during our live auction!		*Ticket sales will end at 7p on 2/15/2024.* *Need not be present to win*
	St. Raphael the Archangel Black and Gold Dinner Auction Saturday, February 15, 2025	50/50 Raffle Ticket \$20 per ticket or sheet of 8 for \$125	Name: _____ Phone #: _____ Address: _____
	Drawing will be held during our live auction!		*Ticket sales will end at 7p on 2/15/2024.* *Need not be present to win*
	St. Raphael the Archangel Black and Gold Dinner Auction Saturday, February 15, 2025	50/50 Raffle Ticket \$20 per ticket or sheet of 8 for \$125	Name: _____ Phone #: _____ Address: _____
	Drawing will be held during our live auction!		*Ticket sales will end at 7p on 2/15/2024.* *Need not be present to win*
	St. Raphael the Archangel Black and Gold Dinner Auction Saturday, February 15, 2025	50/50 Raffle Ticket \$20 per ticket or sheet of 8 for \$125	Name: _____ Phone #: _____ Address: _____
	Drawing will be held during our live auction!		*Ticket sales will end at 7p on 2/15/2024.* *Need not be present to win*
	St. Raphael the Archangel Black and Gold Dinner Auction Saturday, February 15, 2025	50/50 Raffle Ticket \$20 per ticket or sheet of 8 for \$125	Name: _____ Phone #: _____ Address: _____
	Drawing will be held during our live auction!		*Ticket sales will end at 7p on 2/15/2024.* *Need not be present to win*
	St. Raphael the Archangel Black and Gold Dinner Auction Saturday, February 15, 2025	50/50 Raffle Ticket \$20 per ticket or sheet of 8 for \$125	Name: _____ Phone #: _____ Address: _____
	Drawing will be held during our live auction!		*Ticket sales will end at 7p on 2/15/2024.* *Need not be present to win*
	St. Raphael the Archangel Black and Gold Dinner Auction Saturday, February 15, 2025	50/50 Raffle Ticket \$20 per ticket or sheet of 8 for \$125	Name: _____ Phone #: _____ Address: _____
	Drawing will be held during our live auction!		*Ticket sales will end at 7p on 2/15/2024.* *Need not be present to win*

Welcome to ARCHANGEL YOUTH MINISTRY (AYM) covering the parishes of the St. Louis Hills neighborhood (St. Gabriel & St. Raphael). **AYM** is open to all high school teens. No sign-up necessary and teens do not need to be from the St. Louis Hills parishes to participate. High school teens can attend on a regular basis or drop in as it fits their schedules.

Weekly **Sunday Life Teen Nights** (6:45-8:30pm in Gabriel House) include snacks, socializing, games, talks, and discussions.

Wednesday R&R Nights (7-8:30pm in Gabriel House) are unstructured evenings for teens to hang out (recharge & reconnect). See the AYM calendar for specific dates.

DECEMBER INFO

Life Teen Nights will occur every Sunday in December from 6:45-8:30pm in Gabriel house.

Our next Teen Mass with Christmas Party to follow will be **Sunday, December 22**. Teens interested in having a part in the Mass should contact Sarah ASAP.

Our Christmas Party dinner will be pizza and one of the games will be a white elephant gift exchange. All gifts should be something found at home (nothing broken nor trash) and wrapped.

LOOKING AHEAD

***April 25 - 27 | Luke 18 Retreat!** | for 8th graders, led by high school teens | Registration and more information to come.

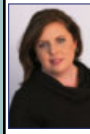
***July 18 - 20 | AYM at Steubenville 2025!** | for current 8th- 12th grade students | Registration is OPEN!





(314) 481-7333
Since 1927

Bartolino's
Hospitality Group
Bartolino's Bartolino's Bartolino's
Chris Chris
Cook good food & give plenty.
bartolinosrestaurants.com



Jennifer Lueken Delf
Sales Associate
314-323-6073 Cell
314-965-3030 Office
314-965-2858 Fax
jennifer.delf@cbgundaker.com
421 South Kirkwood Road
Kirkwood, MO 63122
jenniferdelf.cbintouch.com
Operated by a subsidiary of NRT LLC.



IMO'S PIZZA
832-9677
5806 Hampton Avenue
CARRY OUTS & DELIVERY

WE'RE HIRING!
AD SALES EXECUTIVES

BE YOURSELF.
BRING YOUR PASSION.
WORK WITH PURPOSE.

- Paid training
- Some travel
- Work-life balance
- Full-Time with benefits
- Serve your community



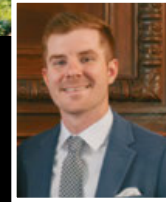
Contact us at
careers@4lpi.com or
www.4lpi.com/careers



Karen Majda
REALTOR® GRI
(314) 574-2560
(314) 353-8888

Wood Brothers Realty
6500 Chippewa St. Fl 1
Saint Louis, MO 63109

keith r manzer
& ASSOCIATES
ESTABLISHED 1983



Cameron Marino
314.809.0583
cameronjamesmarino@gmail.com
keithrmanzer.com

Gladys Manion Inc.
8227 Maryland Ave, Clayton, MO 63105

SUPPORT OUR ADVERTISERS!

SUPPORT OUR ADVERTISERS!



Enjoying life is what it's all about at

Tower Grove Manor

We have garage parking, plus lovely apartments with walk-in closets, full kitchens, and great views of Tower Grove Park and the skyline. More amenities, activities and only minutes from theatres, the Botanical Garden, and the best healthcare.

2710 S. Grand Blvd.
St. Louis, MO 63318
Tel. 314-773-2800
www.towergrovemanager.org



TREE & LAWN CARE EXPERTS SINCE 1880
\$20 OFF
Tree Pruning/Removal/Fertilization
(314) 961-5440 | www.davey.com

- FIELDER - ELECTRICAL SERVICES, INC.
LICENSED • BONDED • INSURED RESIDENTIAL • COMMERCIAL • INDUSTRIAL
Service Upgrades • New Homes • Remodeling • Room Additions • Basements • Kitchens
Bathrooms • Code Violations • Knob & Tube Upgrades • Back Up Generator Systems

\$20 OFF Any Electrical Work of \$100 or more **314-966-3388**

metroStorage express
Climate Control & Drive Up Units Available
No Fees. Gated Facility 24/7 Access
Seniors & Military 10% off
Second Month Free. Closed Circuit Security
metrostoragemo.com
2729 HEREFORD ST. • 314-312-2020
LOCATED ON THE HILL OFF ARSENAL

Paul Karasek Since 1954
BRUNETTI / PESC-CO., INC.
Professional Exterminating Service & Chemical CO.
200 S. Elam
Valley Park, MO 63088
314-487-2208 1-888-220-BUGS

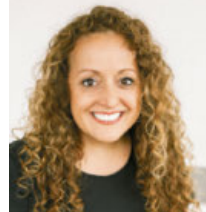
ROSATI-KAIN ACADEMY
Catholic. All-Girls. College-Prep.

APPLY NOW

Educating women to lead
and serve the world!

www.rosati-kain.org / 4389 Lindell Blvd, St. Louis, MO 63108

ANNA GARCIA
garcia PROPERTIES
cell 314.973.3319 • www.garciasll.com
anna@garciaproperties.com



OPEN EVERY DAY FOR DINE IN & PICK UP



314.436.3742
Sun - Thurs: 11am - 10:30pm
Fri - Sat: 11am - 1:30am
1711 South 9th Street

Bieg
PLUMBING COMPANY
Commercial & Residential
(314) 487-4564

GRAVOIS GLASS
Residential & Commercial
GLASS REPLACEMENT

Most Insulated Units in 24 Hours
Mirrors • Table Tops
Insulated Glass • Window Parts • Safety Glass
314-352-2200 | gravoisglass@aol.com
6825 Gravois Ave. St. Louis 63116



For ad info. call 1-800-950-9952 • www.4lpi.com

St Raphael the Archangel - Saint Louis, MO

B 4C 01-1608

Scott R. Holdridge, Agent
Call or Email me Today!
Bus: 314-664-5433
 scott@scottholdridge.com
 scottholdridge.net

I can help you with your Insurance, Banking and Financial Services Needs



HOFFMEISTER COLONIAL MORTUARY
Helping people is our business.

Conveniently located at
 6464 Chippewa in St. Louis Hills



www.hoffmeistercolonial.com • 314.832.7770



Judy McNamara
 3304 Watson Road
 St Louis, MO 63139
 314-781-2290

www.judymcnamara.com

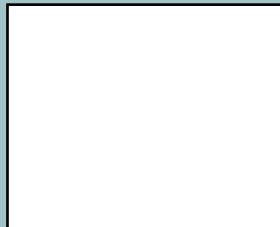
Place Your Ad Here and Support our Parish!

Instantly create and purchase an ad with

AD CREATOR STUDIO



4lpi.com/adcreator



SHORT STAFFED?

Place an ad here to find new local talent for your business.



CALL
 800-950-9952

SOUTH SIDE HARDWARE
Family Owned & Operated Since 1921

Good Neighbors, Good Advice

Steve, Brian, Sean, Gary, & Allison
 6401 Hampton Avenue, St. Louis, MO 63109
southsidetruevaluehardware@gmail.com

SouthsideHardware.com 314-351-0204

RON'S PLUMBING
Specializing In Older Home Repairs

314-752-1101

St. Louis, MO

SARACINO
Dr. Catherine Saracino
 DMD, MSD, MS
ORTHODONTIST
 Braces • Invisalign • Whitening
 314.649.8999 | Saracinoorthodontics.com
 6555 Chippewa St., Suite 200
 St. Louis, MO 63109

Keep Christ in Christmas
 Meaningful Gifts & Home Decor
 Indoor & Outdoor Nativities
 & So Much More!



CATHOLIC SUPPLY
 OF ST. LOUIS, INC.
 ST. LOUIS HILLS | (314) 644-0643
 6759 Chippewa | St. Louis, MO 63109
 Mon-Sat 9:00am to 5:30pm
 ST. CHARLES COUNTY | (636) 379-3705
 2985 Hwy K | O'Fallon, MO 63368
 Mon-Sat 10:00am to 5:30pm
catholicsupply.com

FREE AD DESIGN
 with purchase of this space
CALL
 800-950-9952

DOES YOUR NONPROFIT ORGANIZATION NEED A NEWSLETTER?
 Engaging, ad-supported print and digital newsletters to reach your community.
OUR COMMUNITY NEWSLET
 OCTOBER EDITION
 Scan to contact us!
Visitlpicommunities.com

JAMES LEGRAND
 4414 Donovan
 314-353-6128
legrandsmarket-catering.com
LeGrands Market & Catering

Loyalty LAWN CARE
 A Green Group Company.
loyaltylawncares.com (636) 306-3671

**Fertilization
 Weed Control
 Aeration
 Seeding**

IF YOU LIVE ALONE
MDMedAlert!™ As Low As **\$19⁹⁵** /mo.
 ✓ Ambulance ✓ Police/Fire
 ✓ Family/Friends ✓ GPS & Fall Alert
CALL NOW! 800.808.9294
md-medalert.com

Celebrate life with faith and friends at The Sarah Community!
THE SARAH COMMUNITY
 12284 DePaul Drive
 Bridgeton, MO 63044
 314-209-7000
TheSarahCommunity.com | [TheSarahCommunity](https://www.facebook.com/TheSarahCommunity)

LET'S GROW YOUR BUSINESS
 Place Your Ad Here and Support Our Parish!
CONTACT ME
Iris Mitchell
imitchell@4LPi.com
 (800) 950-9952 x2495

Kutis FUNERAL HOME
 2906 GRAVOIS
 772-3000
 10151 GRAVOIS
 842-4458
 5255 LEMAY FERRY
 894-4500

Come See the New Ford Car Deals in St. Louis

 Mon, Wed, Fri: 8:30am-8pm
 Tues, Thurs: 8:30am-6pm
 Sat: 9am-5pm
 3300 South Kingshighway
 St. Louis, MO 63139
314-664-4100

KITTNER REAL ESTATE GROUP

angelakittner.com | 314-775-2745