



# SAINT RAPHAEL THE ARCHANGEL

CATHOLIC CHURCH

JANUARY 26, 2025 THIRD SUNDAY IN ORDINARY TIME



## 3<sup>RD</sup> SUNDAY IN ORDINARY TIME



*The Spirit of the Lord is upon me...  
He has sent me to proclaim liberty to captives  
and recovery of sight to the blind,  
to let the oppressed go free.  
- Lk 4:18*


### WELCOME!


#### VISIT OR CONTACT US


6047 Bishops Place  
Saint Louis, MO 63109

314.352.8100  
straphaelarchangel.org

Mon.-Thu. | 7:30am-4:00pm  
Fri. | 7:30am-12:00pm

 @SRAtoday

 @SRAtoday

 straphaelarchangel

#### SCHOOL INFORMATION

6000 Jamieson Avenue  
Saint Louis, MO 63109

314.352.9474 | 314.351.7477 (Fax)

Mon.-Fri. | 7:00am-3:00pm

### MASS SCHEDULE

#### WEEKEND MASS

Saturday | 7:00am, 4:30pm  
Sunday | 9:00am

#### WEEKDAY MASS

Mon. - Fri. | 8:00am

#### CONFESSION

Monday - Friday | 7:30am  
Saturday | 3:30pm  
Other | By Appointment

#### CHURCH OPEN FOR PRIVATE PRAYER

Mon.-Fri. | 8:00am-2:00pm  
Saturday | 8:00am-4:30pm

#### PARISH CLERGY

Fr. Thomas Molini, Pastor  
thomasmolini@archstl.org

Fr. Robert Lawson, Associate Pastor  
robertlawson@archstl.org

#### LAY LEADERSHIP

Brian McCarthy, Pastoral Council  
brianmccarthy@peaknet.net

Liz Murphey, School Board  
schoolboard@straphaelarchangel.org

Joseph Cyr, Finance Council  
314.335.7322

Jacqueline Ilg, HSA President  
hsa@straphaelarchangel.org

#### PARISH STAFF

Ray and Mary Anne Braun, Music Ministers  
Braun@straphaelarchangel.org

Diane Halbert, Parish Office Manager  
halbert@straphaelarchangel.org

Mickey Janos, Admn. Assistant  
janos@straphaelarchangel.org

Pam Hager, Parish Support Staff/  
Child Safety Coordinator  
hager@straphaelarchangel.org

Robert Schlueter, Maintenance

Julie Hayes, School Principal  
hayes@straphaelarchangel.org

Kathy Shaver, School Secretary  
secretary@straphaelarchangel.org

Qi Franz, Cafeteria Manager  
franz@straphaelarchangel.org

Sarah Henderson, Youth Minister  
hendersons@stgabrielstl.org

JANUARY 26, 2025 THIRD SUNDAY IN ORDINARY TIME

## Event Sponsorship

Event sponsorship includes your logo projected on our "Sponsor Big Screen", printed acknowledgement on tournament brackets and will be viewed by 64 teams and more than 500 individual participants.

### The Logan Warnecke Memorial 3<sup>rd</sup> & 4<sup>th</sup> Grade Boys and Girls Basketball Tournament, Saturday, February 16th - Sunday, March 9th 2024



The Basketball Tournament is an annual event, hosted by the St. Raphael Men's Club and Athletic Association. The tournament benefits the students of St. Raphael the Archangel school. The tournament is named in memory of one of our alums, Logan Warnecke, class of 2012. Logan was a constant figure as a referee at the tournament, often driving in from MIZZOU to ref for the weekend. His smile was infectious. He was never too busy to shoot around with the scorekeepers & always took time to explain a call to the young tournament players.

We invite you to #LoganUp by sponsoring this event.

## THANK YOU!

I would like to sponsor at the \$150 level.

Company Name: \_\_\_\_\_

Contact Name/Number: \_\_\_\_\_

Contact Email: \_\_\_\_\_

Address: \_\_\_\_\_

St. Raphael the Archangel is a 501(C)(3) Non-Profit. Federal Tax # 43-0653561 NCEA 246242

Please make check payable to SRA,  
then send this completed form with your payment **MARKED BASKETBALL TOURNAMENT** to:  
SRA \* 6000 Jamieson Ave \* St. Louis, MO 63109 \* 314.352.8100

*Please send a digital copy of your company's logo to  
Jen Delf, at [jenniferdelf@gmail.com](mailto:jenniferdelf@gmail.com) / 314.323.6073.*

### Save the Date - Progressive Dinner!

Save the date! The SRA Ladies' Club is organizing a Progressive Community Dinner on Saturday, March 29, 2025, after the 4:30pm Mass. **ALL** parishioners are invited to attend! We will be looking for households to host small groups for appetizers and dinner. During the next few weeks, please consider hosting. More details and registration forms to come.





**Sunday, January 26**  
9:00am Laura E, Klos

**Monday, January 27**  
8:00am Hodes Family, SI

**Tuesday, January 28**  
8:00am Kris Schneidewind

**Wednesday, January 29**  
9:00am John Ruzicka

**Thursday, January 30**  
8:00am Bob Mullins

**Friday, January 31**  
8:00am Liddy Family

**Saturday, February 1**  
7:00am Maureen Baudenistel  
4:30pm O'Mallery Family

**Sunday, February 2**  
9:00am George Sullens, Jr.

*"Go, eat rich foods and drink sweet drinks, and allot portions to those who had nothing prepared..." Nehemiah 8:10*

Ezra's instructions to the people show us that God does not forbid us from enjoying the good things in life. He wants us to be happy! However, God expects us to be grateful for all that He has given us and to generously share our blessings with those who are in need. Now here's the hard part – to share all we have without expecting anything in return.

### Your Contributions to God and Parish

Jan. 19, 2025 (Envelopes Used)	This Week	Year-to-Date
<b>Regular Env. (29)</b>	\$ 2,710	\$ 122,735
<b>Loose Money</b>	\$ 5,243	\$ 61,690
<b>School Support</b>	\$ 265	\$ 5,813
<b>Building Fund</b>	\$ 15	\$ 5,515
<b>Holy Days</b>	\$ 0	\$ 9,059
<b>Online Giving (51)</b>	\$ 3,043	\$ 86,625
<b>St. Louis Review</b>	(\$ 210)	
<b>First Offering</b>	\$ 25	
<b>Grand Total</b>	\$ 11,511	
<b>Total for Parish</b>	\$ 11,301	\$ 300,408
<b>Amount Needed</b>	\$ 10,000	\$ 300,000
<b>Difference</b>	<u>\$ 1,301</u>	<u>\$ 408</u>
<b>FYE 2024</b>		<u>(\$ 17,741)</u>

#### St. Vincent de Paul

In today's Gospel, Jesus tells us that He was anointed to bring glad tidings to the poor, liberty to captives, sight to the blind, and freedom to the oppressed. We try to follow Jesus' example by serving our neighbors in need. We help by paying rent and utilities for the poor. By working with our neighbors, we are able to suggest alternatives to what is holding them back. We assist them when they are stressed and have a hard time seeing a better future. We guide them to agencies able to help free them from an abusive situation. Your prayers and donations support our mission as we try to follow Jesus' example. Thank you.

This weekend's Sacred Scripture readings:

**Sunday, January 26:**  
Ritual Song: No. 1202  
Pray Together: Page 78



# ALTAR SERVERS

## SERVERS FOR JAN. 27 - FEB. 2, 2024

### Monday, January 27

8:00am Archie Geisz Vivien Smith  
William Schneeberger

### Tuesday, January 28

8:00am Harrison Baker Mac Teeter  
Kerry Mense

### Wednesday, January 29

8:00am Helen Potts Emma Peters  
Isaac Potts

### Thursday, January 30

8:00am Elle Anstey Jake Anstey  
Stassi Boxdorfer

### Friday, January 31

8:00am Lucca LoBello Isa Hoglebe  
Eleanor Chitwood

### Saturday, February 1

4:30pm Katelyn Feldman Lucas Feldman  
Lucy Howard

### Sunday, February 2

9:00am Helen Potts Grace Berta  
Jude Potts

## LECTORS/MINISTERS FOR THE WEEKEND OF FEBRUARY 2 - 3, 2025

### LECTORS

4:30pm To Be Scheduled 9:00am  
To Be Scheduled

**Extraordinary Ministers**  
To Be Scheduled

# UPCOMING EVENTS

### Monday, January 27

8:00am Church Mass  
3:30pm Gym Basketball Practices  
6:00pm Cafeteria 3rd Gr. Girl Scouts  
6:30pm Parish Off. St. Vincent de Paul  
7:00pm Parish Off. Knights of Columbus

### Tuesday, January 28

8:00am Church Mass  
3:30pm Gym Basketball Practices  
6:00pm Gym Family Trivia

### Wednesday, January 29

7:30am Church Rosary  
8:00am Church Mass  
3:15pm Gym 5th Gr. Boys Basketball  
5:00pm Gym Basketball Practices  
8:30pm Gym Old Man Basketball

### Thursday, January 30

8:00am Church Mass  
2:00pm Cafeteria Dance Class  
5:00pm Gym Basketball Clinic

### Friday, January 31

7:30am Church Rosary  
8:00am Church Mass  
9:00am School Grandparents Day  
3:30pm Gym Basketball Practices  
5:30pm Gym Basketball Games

### Saturday, February 1

7:00am Church Mass  
8:00am Church Music Ministry Rehearsal  
9:00am Gym Basketball Games  
4:30pm Church Mass - Basketball Team Mass

### Sunday, February 2

9:00am Church Mass  
9:00am Church/Off. OCIA  
10:00am Gym 2nd, 3rd, and 4th Gr. Basketball  
12:00pm Gym Basketball Games

# DAILY READINGS

Sunday	Neh 8:2-4a, 5-6, 8-10/Ps 19:8, 9, 10, 15 (see Jn 6:63c)/1 Cor 12:12-30 or 12:12-14, 27/Lk 1:1-4; 4:14-21
Monday	Heb 9:15, 24-28/Ps 98:1, 2-3ab, 3cd-4, 5-6/Mk 3:22-30
Tuesday	Heb 10:1-10/Ps 40:2 and 4ab, 7-8a, 10, 11/Mk 3:31-35
Wednesday	Heb 10:11-18/Ps 110:1 2, 3, 4/Mk 4:1-20
Thursday	Heb 10:19-25/Ps 24:1-2, 3-4ab, 5-6/ Mk 4:21-25
Friday	Heb 10:32-39/Ps 37:3-4, 5-6, 23-24, 39 -40/Mk 4:26-34
Saturday	Heb 11:1-2, 8-19/Lk 1:69-70, 71-72, 73 -75/Mk 4:35-41
Next Sunday	Mal 3:1/4; Heb 2:14-28/Ps 24:7, 8, 9, 10/Lk 2:22-40 or 2:22-32



SRA Friends,

SRA's biggest fundraiser, The Black & Gold Auction, is just a few weeks away. We have some exciting new items this year which we will be "previewing" shortly. While the attire is formal, the atmosphere is as exciting as you want it to be. We have a delicious dinner catered by Bartolino's, an open bar, and live music until midnight, so we assure you that you won't be hungry, thirsty, or bored!

The funds raised from the auction help bridge the gap between what tuition covers and what the school's total expenses amount to. The "Fund-A-Need" will be directed toward a new playground area and improvements to the parking lot. This event plays an integral role in ensuring our school and children continue to thrive, and we ask that you consider participating. Individual tickets are available, so you don't need to fill up a table, just show up. If you are new to the community, this is a great way to meet new families.

Auction and raffle tickets can be purchased through <https://blackandgold25.givesmart.com> or by check delivered to the parish office.

Thank you,

Mark Pfeiffer – 2025 Auction Chairperson  
[auktion.st.raphael@gmail.com](mailto:auktion.st.raphael@gmail.com)



## SRA Catholic Schools Week Service Project 2025



Claver House

*We are collecting donations to benefit Claver House*

*Located in the Ville Neighborhood of North St. Louis. Claver*

*House promotes faith-based community, social justice, and simplicity of life. The Claver House Community provides members the opportunity to develop their faith life by learning about and practicing Ignatian spirituality. Members of Claver House participate in weekly community-building and reflection activities.*

Attendance at school is an issue for students in the neighborhood, whose families do not have the means to take care of some basic needs that we can sometimes take for granted. Your task for this donation drive is simple! Our school is also collecting specific items at each grade level. Choose an item or two from the list below and place it in the donation box at the Highfield Church entrance. Or, follow the links and have your donation delivered directly to Claver House.

*Thank you for your generosity!*

- Bar soap
- Body lotion
- Deodorant
- Disposable washcloths
- Kleenex travel packs
- Tampers
- Toothbrushes
- Toothpaste
- Wet wipes
- Dry cereal packs
- Dry fruit packs
- Cheese crackers packs
- Fruit cups
- Granola bars
- Jello cups
- Nutri-grain bars
- Peanut butter packs
- Pop tarts
- pudding cup

Walmart Wish List:

<https://www.walmart.com/registry/RR/65e1b04b-e8e7-4804-8d36-2f5e2f1d302>

Amazon Wish List:

[https://www.amazon.com/hz/wishlist/ls/2U4H3R06U5K2B3P-ref\\_mlist\\_d\\_wl\\_fw\\_spc\\_S](https://www.amazon.com/hz/wishlist/ls/2U4H3R06U5K2B3P-ref_mlist_d_wl_fw_spc_S)

*If you have any questions, please contact Mrs. Meier: [meier@traphadarchangl.org](mailto:meier@traphadarchangl.org)*



# Basketball Team Mass

*Saturday, February 1, 4:30 pm*

Join us for unity and prayer  
at the SRA Basketball Team Mass!

All are invited to celebrate together.  
This liturgy will include a special team  
blessing for athletes, refs, and coaches.



Players can wear their  
uniform to Mass.



***Join us for the Black and Gold Basketball  
Jamboree immediately after in the gym to  
showcase the talents of our future CYC  
basketball stars. Food and beverages will be  
available for purchase.***

## Lector, Server or Eucharistic Minister Opportunities

If you are interested in volunteering to be a Lector, Server or Eucharistic Minister, there are forms at each one of the church entrances to complete and begin this process. All existing Lectors and Eucharistic Ministers, who wish to continue to serve, must also complete one of the forms and return ASAP for scheduling. New volunteers will start in February; brief training is required and will be provided by Fr. Lawson. You may return the form to the Parish Office or put it in the collection basket. If you have any questions, please contact Fr. Lawson. We hope you will consider joining one of more of these ministries.



## Charitable Tax Statements

The 2024 donation tax statements have been mailed. If you do not receive yours, please call the parish office and we will print another copy for you.

## WINTER OUTREACH - A MINISTRY OF MERCY

Encouraged by our Catholic Social Teachings, "Option for the Poor and Vulnerable," many parish communities are committed to making St. Louis Winter Outreach a faith-filled Ministry of Mercy. "As long as you did it to one of these the least of my brethren, you did it to me." MT 25:31-46

As winter approaches, our homeless "brethren" will spend cold days and nights on the streets of St. Louis. In an effort to give them some comfort, we are asking for help in providing meals to an overflow shelter.

**DATES: SATURDAYS (1:00pm Dropoff) February 8**

Please consider joining our Ministry of Mercy by providing one or more of the following:

9x13" Casserole: meat, fish, veggie, or breakfast

Cookies, cupcakes, breads: (12 to 24 servings)

Prepared food should be baked, frozen, wrapped, and marked. Donations are to be dropped off at Our Lady of Sorrows parking lot at 1:00pm. If needed, other arrangements can be made. For more information or if you would like to share a dish, please contact Mary Ellen Mueller: 314.374.1712 or email [maryem@brick.net](mailto:maryem@brick.net).

## Protecting God's Children

Did you know that all employees and volunteers in the schools and parishes of the Archdiocese of St. Louis are required to be in compliance with the Safe Environment Program to help prevent the abuse of a minor or vulnerable adult? Those who work with or near minors or vulnerable adults are required to: (1) attend a Protecting God's Children workshop; (2) complete a national criminal background screening and agree to regular updates; and (3) commit to the Archdiocese's Code of Ethical Conduct for Clergy, Employees, and Volunteers Working in Ministry policy. Please contact the parish office to complete these compliance efforts. Call 314.352.8100 for details and to sign up for a PGC workshop; or email [hager@straphaelarchangel.org](mailto:hager@straphaelarchangel.org). Thank you.



## Mass Intentions

Mass intentions are available in the parish office. Please call the office or stop by Monday through Thursday, 7:30am until 4:00pm, and Friday 7:30am until noon, with your Special Intention or Repose of the Soul intention requests. The suggested offering is \$10 per Mass intention. If needed, you can pick up a card to send to the family when you drop off your offering.

### Rosary

Every Wednesday and Friday at 7:30am, our community prays the Rosary together in church. Please join us.

### Flu Season

Because of flu season, please do not leave any personal items, i.e., tissues, in the pews, and, especially, not in the missalette holders. Thank you for your cooperation.

**Welcome to ARCHANGEL YOUTH MINISTRY (AYM)** covering the parishes of the St. Louis Hills neighborhood (St. Gabriel & St. Raphael). **AYM** is open to all high school teens. No sign-up necessary and teens do not need to be from the St. Louis Hills parishes to participate. High school teens can attend on a regular basis or drop in as it fits their schedules.

Weekly **Sunday Life Teen Nights** (6:45-8:30pm in Gabriel House) include snacks, socializing, games, talks, and discussions.

**Wednesday R&R Nights** (7-8:30pm in Gabriel House) are unstructured evenings for teens to hang out (recharge & reconnect). See the AYM calendar for specific dates.

### Luke 18 Retreat 2025 - for 8th graders, led by high school teens:

"Believe" | April 25 - 27

Team Member (high school teens) registration is now OPEN via the Google Form link. Please read all the required preparation meeting dates and times before registering and contact Sarah with any questions. Registration will close on Monday, January 27.

8th Grader registration will be open February 10 through March 3.

### LOOKING AHEAD

**\*April 25 - 27 | Luke 18 Retreat!** | for 8th graders, led by high school teens | Registration for high school team leaders is OPEN and will close on **Monday, January 27!**

**\*July 18 - 20 | AYM at Steubenville 2025!** | for current 8<sup>th</sup> - 12<sup>th</sup> grade students | Registration is OPEN and will close Monday, January 27! Visit the SGA website for more information and to register.

Follow us on Instagram@archangelym

Like our Facebook Group: Archangel Youth Ministry

Join the SGA or SRA Flocknote Group: Youth Ministry

Visit the Youth Group page on the SGA parish website

Contact Youth Minister: Sarah Henderson - hendersons@stgabrielstl.org

APRIL 25 - 27, 2025

Believe



8TH GRADE RETREAT  
LED BY AYM HIGH SCHOOL TEENS

LUKE 18

TEAM MEMBER REGISTRATION IS NOW OPEN VIA  
THE GOOGLE FORM LINK!

[HTTPS://FORMS.GLE/IANKUVGCG1IX8FVLA](https://forms.gle/iAnkUVGCG1IX8FVLA)

**You Don't Want To Miss...**  
**Steubenville 2025!**



**Current 8th through 12th graders**

**July 18th - 20th**  
**Missouri State University**

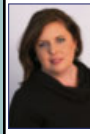
**AYM Registration Closes Jan. 27th!**  
**Link on SGA Website**

**Contact: Sarah Henderson | Youth Minister**  
**hendersons@stgabrielstl.org**

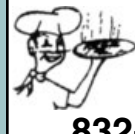


**(314) 481-7333**  
Since 1927

**Bartolino's**  
Hospitality Group  
Bartolino's Bartolino's Bartolino's  
Chris Chris  
Cook good food & give plenty.  
bartolinosrestaurants.com



**Jennifer Lueken Delf**  
Sales Associate  
314-323-6073 Cell  
314-965-3030 Office  
314-965-2858 Fax  
jennifer.delf@cbgundaker.com  
421 South Kirkwood Road  
Kirkwood, MO 63122  
jenniferdelf.cbintouch.com  
Operated by a subsidiary of NRT LLC.



**IMO'S PIZZA**  
832-9677  
5806 Hampton Avenue  
**CARRY OUTS & DELIVERY**

**WE'RE HIRING!**  
AD SALES EXECUTIVES

BE YOURSELF.  
BRING YOUR PASSION.  
WORK WITH PURPOSE.

- Paid training
- Some travel
- Work-life balance
- Full-Time with benefits
- Serve your community



Contact us at  
careers@4lpi.com or  
www.4lpi.com/careers



**Karen Majda**  
REALTOR® GRI  
(314) 574-2560  
(314) 353-8888

**Wood Brothers Realty**  
6500 Chippewa St. Fl 1  
Saint Louis, MO 63109



Climate Control & Drive Up Units Available  
No Fees. Gated Facility 24/7 Access  
Seniors & Military 10% off  
Second Month Free. Closed Circuit Security  
metrostoragemo.com  
2729 HEREFORD ST. • 314-312-2020  
LOCATED ON THE HILL OFF ARSENAL

Paul Karasek Since 1954

**BRUNETTI / PESC-CO., INC.**  
Professional Exterminating Service & Chemical CO.

200 S. Elam  
Valley Park, MO 63088

314-487-2208 1-888-220-BUGS

**- FIELDER - ELECTRICAL SERVICES, INC.**  
LICENSED • BONDED • INSURED RESIDENTIAL • COMMERCIAL • INDUSTRIAL  
Service Upgrades • New Homes • Remodeling • Room Additions • Basements • Kitchens  
Bathrooms • Code Violations • Knob & Tube Upgrades • Back Up Generator Systems  
**\$20 OFF** Any Electrical Work of \$100 or more **314-966-3388**

**SUPPORT OUR ADVERTISERS!**

**SUPPORT OUR ADVERTISERS!**



Enjoying life is what it's all about at  
**Tower Grove Manor**  
We have garage parking, plus lovely apartments with walk-in closets, full kitchens, and great views of Tower Grove Park and the skyline. More amenities, activities and only minutes from theatres, the Botanical Garden, and the best healthcare.

2710 S. Grand Blvd.  
St. Louis, MO 63318  
Tel. 314-773-2800  
www.towergrovemanager.org



TREE & LAWN CARE EXPERTS SINCE 1880  
**\$20 OFF**  
Tree Pruning/Removal/Fertilization  
(314) 961-5440 | www.davey.com

**DOES YOUR NONPROFIT ORGANIZATION NEED A NEWSLETTER?**

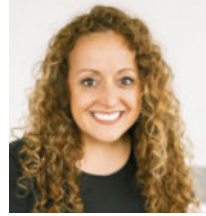
Engaging, ad-supported print and digital newsletters to reach your community.

Visit [lpicommunities.com](http://lpicommunities.com)

**OUR COMMUNITY NEWSLETTER**  
OCTOBER EDITION  
Scan to contact us!

**ROSATI-KAIN ACADEMY**  
Catholic. All-Girls. College-Prep.  
**APPLY NOW**  
Educating women to lead and serve the world!  
www.rosati-kain.org / 4389 Lindell Blvd, St. Louis, MO 63108

**ANNA GARCIA**  
garcia PROPERTIES  
cell 314.973.3319 • www.garciasll.com  
anna@garciaproperties.com



**EPIC PIZZA**  
314.436.3742  
Sun - Thurs: 11am - 10:30pm  
Fri - Sat: 11am - 1:30am  
1711 South 9th Street

**Bieg PLUMBING COMPANY**  
Commercial & Residential  
(314) 487-4564

**GRAVOIS GLASS**  
Residential & Commercial  
GLASS REPLACEMENT  
Most Insulated Units in 24 Hours  
Mirrors • Table Tops  
Insulated Glass • Window Parts • Safety Glass  
314-352-2200 | [gravoisglass@aol.com](mailto:gravoisglass@aol.com)  
6825 Gravois Ave. St. Louis 63116

**Scott R. Holdridge, Agent**  
**Call or Email me Today!**  
**Bus: 314-664-5433**  
 scott@scottholdridge.com  
 scottholdridge.net

*I can help you with your Insurance, Banking and Financial Services Needs*



**HOFFMEISTER COLONIAL MORTUARY**  
*Helping people is our business.*

Conveniently located at  
 6464 Chippewa in St. Louis Hills



[www.hoffmeistercolonial.com](http://www.hoffmeistercolonial.com) • 314.832.7770



**Judy McNamara**  
 3304 Watson Road  
 St Louis, MO 63139  
 314-781-2290

[www.judymcnamara.com](http://www.judymcnamara.com)

**Place Your Ad Here and Support our Parish!**

Instantly create and purchase an ad with

**AD CREATOR STUDIO**



[4lpi.com/adcreator](http://4lpi.com/adcreator)



**New Construction, Additions, & Garages**

**STL BUILD CO.** 314-329-4955

[build@stlbuidco.com](mailto:build@stlbuidco.com) • [www.stlbuidco.com](http://www.stlbuidco.com)



*Specializing In Older Home Repairs*

**314-752-1101**

St. Louis, MO



**Good Neighbors, Good Advice**

Steve, Brian, Sean, Gary, & Allison  
 6401 Hampton Avenue, St. Louis, MO 63109  
[southsidetruevaluehardware@gmail.com](mailto:southsidetruevaluehardware@gmail.com)

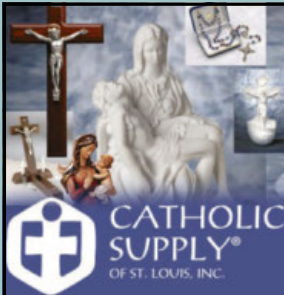
[SouthsideHardware.com](http://SouthsideHardware.com) 314-351-0204



**Dr. Catherine Saracino**  
 DMD, MSD, MS

**ORTHODONTIST**

*Braces • Invisalign • Whitening*  
 314.649.8999 | [Saracinoorthodontics.com](http://Saracinoorthodontics.com)  
 6555 Chippewa St., Suite 200  
 St. Louis, MO 63109



**CATHOLIC SUPPLY**  
 OF ST. LOUIS, INC.  
 ST. LOUIS HILLS | (314) 644-0643  
 6759 Chippewa | St. Louis, MO 63109  
 Mon-Sat 9:00am to 5:30pm  
 ST. CHARLES COUNTY | (636) 379-3705  
 2985 Hwy K | O'Fallon, MO 63368  
 Mon-Sat 10:00am to 5:30pm  
[catholicssupply.com](http://catholicssupply.com)



**FREE AD DESIGN**

with purchase of this space

**CALL 800-950-9952**

**DOES YOUR NONPROFIT ORGANIZATION NEED A NEWSLETTER?**



Engaging, ad-supported print and digital newsletters to reach your community.



Scan to contact us!

Visit [lpicomunities.com](http://lpicomunities.com)

**JAMES LEGRAND**

4414 Donovan  
 314-353-6128

[legrandsmarket-catering.com](http://legrandsmarket-catering.com)

**LeGrands Market & Catering**



**Fertilization  
 Weed Control  
 Aeration  
 Seeding**

[loyaltylawncare.com](http://loyaltylawncare.com) (636) 306-3671

**IF YOU LIVE ALONE**

**MDMedAlert!**™ As Low As **\$19<sup>95</sup>** /mo.  
 ✓ Ambulance ✓ Police/Fire  
 ✓ Family/Friends ✓ GPS & Fall Alert

**CALL NOW! 800.808.9294**  
[md-medalert.com](http://md-medalert.com)



Celebrate life with faith and friends at The Sarah Community!

12284 DePaul Drive  
 Bridgeton, MO 63044  
 314-209-7000

[TheSarahCommunity.com](http://TheSarahCommunity.com) | [TheSarahCommunity](https://www.facebook.com/TheSarahCommunity)

**LET'S GROW YOUR BUSINESS**

Place Your Ad Here and Support Our Parish!

**CONTACT ME  
 Iris Mitchell**

[imitchell@4LPi.com](mailto:imitchell@4LPi.com)  
 (800) 950-9952 x2495

**Kutis FUNERAL HOME**

2906 GRAVOIS  
 772-3000

10151 GRAVOIS  
 842-4458

5255 LEMAY FERRY  
 894-4500

**Proud Parishioners & Supporters of SRA for 20+ years**



**John & Alec Schicker**  
 314-664-4100  
**SchickerAutomotive.com**



**KITTNER REAL ESTATE GROUP**

[angelakittner.com](http://angelakittner.com) | 314-775-2745



For ad info. call 1-800-950-9952 • [www.4lpi.com](http://www.4lpi.com)

St Raphael the Archangel - Saint Louis, MO

A 4C 01-1608