



SAINT RAPHAEL THE ARCHANGEL

CATHOLIC CHURCH

JULY 14, 2024 FIFTEENTH SUNDAY IN ORDINARY TIME



15th SUNDAY IN ORDINARY TIME

Jesus summoned the Twelve and began to send them out two by two and gave them authority over unclean spirits. - Mk 6:7

WELCOME!

VISIT OR CONTACT US


6047 Bishops Place
Saint Louis, MO 63109

314.352.8100
straphaelarchangel.org

Mon.-Thu. | 7:30am-4:00pm
Fri. | 7:30am-12:00pm

 @SRAtoday

 @SRAtoday

 straphaelarchangel

SCHOOL INFORMATION

6000 Jamieson Avenue
Saint Louis, MO 63109

314.352.9474 | 314.351.7477 (Fax)

Mon.-Fri. | 7:00am-3:00pm

MASS SCHEDULE

WEEKEND MASS

Saturday | 7:00am, 4:30pm
Sunday | 9:00am

WEEKDAY MASS

Mon. - Fri. | 8:00am

CONFESSION

Monday - Friday | 7:30am
Saturday | 3:30pm
Other | By Appointment

CHURCH OPEN FOR PRIVATE PRAYER

Mon.-Fri. | 8:00am-2:00pm
Saturday | 8:00am-4:30pm

PARISH CLERGY

Fr. Thomas Molini, Pastor
thomasmolini@archstl.org

Fr. Robert Lawson, Associate Pastor
robertlawson@archstl.org

LAY LEADERSHIP

Brian McCarthy, Pastoral Council
brianmccarthy@peaknet.net

Liz Murphey, School Board
schoolboard@straphaelarchangel.org

Joseph Cyr, Finance Council
314.335.7322

Jacqueline Ilg, HSA President
hsa@straphaelarchangel.org

PARISH STAFF

Ray and Mary Anne Braun, Music
Ministers
Braun@straphaelarchangel.org

Diane Halbert, Parish Office
Manager
halbert@straphaelarchangel.org

Mickey Janos, Admn. Assistant
janos@straphaelarchangel.org

Pam Hager, Parish Support Staff/
Child Safety Coordinator
hager@straphaelarchangel.org

Robert Schlueter, Maintenance

Julie Hayes, School Principal
hayes@straphaelarchangel.org

Kathy Shaver, School Secretary
secretary@straphaelarchangel.org

Qi Franz, Cafeteria Manager
franz@straphaelarchangel.org

Sarah Henderson, Youth Minister
hendersons@stgabrielstl.org

JULY 14, 2024 FIFTEENTH SUNDAY IN ORDINARY TIME

Order online **today!**

Dear parents,

We are happy to announce that we have chosen to sell prepackaged school supplies for the next school year through School Tool Box.

Want to avoid the back-to-school rush?

- Put your zip code in the box at **SchoolToolBox.com**
- Find the school, then choose your child's new grade

Each supply box matches your teacher's approved list. You can add extras or remove what you don't need. After you pay online, supplies are **shipped directly to your home address.**

It doesn't get easier than that!



SCHOOL TOOL BOX
schooltoolbox.com
800-952-1119

Your order supports



One Box, One Meal

School Name:

St. Raphael The Archangel School
Saint Louis, MO

Ordering Available:

Beginning June 11th

Allow 10 days for processing.



Notes



Scan here to view your school's boxes and place your order today!





Sunday, July 14

9:00am Shirley Buffa

Monday, July 15

8:00am James Ludwig

Tuesday, July 16

8:00am Kris Schneidewind

Wednesday, July 17

8:00am Liddy Family

Thursday, July 18

8:00am Dr. Jim Molchan

Friday, July 19

8:00am Marcia Wakelman

Saturday, July 20

7:00am
4:30pm Richard and Nancy Werner

Sunday, July 21

9:00am Jeanie Huelsman

“He instructed them to take nothing for the journey but a walking stick – no food, no sack, no money in their belts.” Mark 6:8

Imagine taking nothing but a stick when you go on a trip. The Apostles must have really trusted in God’s providential care. Think of all the material things “we can’t live without” in today’s world. We make our life’s journey more difficult because of all the material baggage that we drag along. Putting God first in everything and putting our money and possessions second give us freedom; therefore, we don’t become “slaves” to acquiring more things.

Your Contributions to God and Parish

July 7, 2024 (Envelopes Used)	This Week	Year-to-Date
Regular Env. (44)	\$ 5,246	\$ 237,648
Loose Money	\$ 1,718	\$ 83,776
School Support	\$ 130	\$ 7,455
Building Fund	\$ 290	\$ 10,942
Holy Days	\$ 0	\$ 7,027
Online Giving (52)	\$ 2,531	\$ 170,179
First Offering	\$ 5	
Peter’s Pence	(\$ 80)	
Grand Total	\$ 10,000	
Total for Parish	\$ 9,920	\$ 522,179
Amount Needed	\$ 10,000	\$ 540,000
Difference	<u>(\$ 80)</u>	<u>(\$ 17,821)</u>
FYE 2024		<u>(\$ 17,741)</u>

St. Vincent de Paul

We ask for your prayers as we humbly enter the homes of our neighbors in need. Your generous gifts are a reinforcement of our mission. Please ask Our Lord to give us direction, understanding, patience, and strength. Most of all, please ask Our Lord to help us give love to those who are most in need of it.



This weekend’s Sacred Scripture readings:

Sunday, July 14:

Ritual Song: No. 1237
Pray Together: Page 41



ALTAR SERVERS

SERVERS FOR JULY 20 AND 21, 2024

Saturday, July 20

4:30pm Helen Potts Jude Potts
William Schneeberger

Sunday, July 21

9:00am Christian Bernadt Caleb Bernadt
Gavin Eddingfield

LECTORS/MINISTERS FOR THE WEEKEND OF JULY 20 AND 21, 2024

LECTORS

4:30pm
Denise Howard

9:00am
Barb Cramer

Extraordinary Ministers

Greg Heuing
Margie Auer
Kevin Liddy

Krissy Sullivan
Marilyn Unger
Gerald Unger

UPCOMING EVENTS

Monday, July 15

8:00am Church Mass
7:00pm Frpl. Rm. School Board

Tuesday, July 16

8:00am Church Mass
5:00pm Gym 1st & 2nd Gr. Basketball
6:00pm Gym 3rd, 4th, & 5th Gr. Basketball
6:00pm Frpl. Rm. Finance Council
7:00pm Cafeteria Men's Club

Wednesday, July 17

7:30am Church Rosary
8:00am Church Mass
5:00pm Gym 1st & 2nd Gr. Basketball
6:00pm Gym 3rd, 4th, & 5th Gr. Basketball

Thursday, July 18

8:00am Church Mass
7:00pm Cafeteria Ladies' Club

Friday, July 19

7:30am Church Rosary
8:00am Church Mass

Saturday, July 20

7:00am Church Mass
4:30pm Church Mass

Sunday, July 21

9:00am Church Mass

DAILY READINGS

Sunday	Am 7:12-15/Ps 85:9-10, 11-12, 13-14 (8)/Eph 1:3-14 or 1:3-10/Mk 6:7-13
Monday	Is 1:10-17/Ps 50:8-9, 16bc-17, 21 and 23/Mt 10:34—11:1
Tuesday	Is 7:1-9/Ps 48:2-3a, 3b-4, 5-6, 7-8/Mt 11:20-24
Wednesday	s 10:5-7, 13b-16/Ps 94:5-6, 7-8, 9-10, 14-15/Mt 11:25-27
Thursday	Is 26:7-9, 12, 16-19/Ps 102:13-14ab and 15, 16-18, 19-21/Mt 11:28-30
Friday	Is 38:1-6, 21-22, 7-8/Is 38:10, 11, 12abcd, 16/Mt 12:1-8
Saturday	Mi 2:1-5/Ps 10:1-2, 3-4, 7-8, 14/Mt 12:14-21
Next Sunday	Jer 23:1-6/Ps 23:1-3, 3-4, 5, 6 (1)/Eph 2:13-18/Mk 6:30-34

Annual Catholic Appeal



The 2024 Annual Catholic Appeal continues. All those who have an ACA card, please fill it out and drop it into the collection basket. If you do not have an ACA card, please contact the parish office or call Fred Hodes - 314.752.8742. Also, there is the option of contributing online. One can Text to Give at "ACA" to 243752; Scan to Give; Give on Line at aca.archstl.org; or make a pledge over the phone by contacting the ACA office at 314.792.7680. Thank you for your past support. Please consider a generous contribution to this year's appeal.

Music Teacher (2024-25)

St. Raphael the Archangel is seeking a dynamic, passionate, and enthusiastic part-time (2 days a week) music teacher for the 2024-2025 school year. We are looking for a faith-filled Catholic educator excited to share the joy of the Gospel with the students. The candidate should be qualified and certified to teach music to grades Pre-K through Eighth.

Candidate should be comfortable to collaborate as a team member, to exhibit knowledge and experience with Google Classroom and other learning platforms, and to mentor students' needs through differentiation and best instructional practices. Qualified candidates should send a resume, cover letter, and references to Julie Hayes at hayes@straphaelarchangel.org

Second Grade Teacher (2024-25)

St. Raphael the Archangel School is seeking a full-time, degreed, and certified 2nd-grade teacher for the 2024-2025 school year. Responsibilities include preparing students for receiving the Sacrament of Reconciliation and First Holy Communion. The applicant must be a positive Christian role model and exhibit a love for teaching. Interested applicants, please send a cover letter and resume with references to Julie Hayes at hayes@straphaelarchangel.org.

You must also begin the Archdiocesan application process at [//www.archstl.org/education](http://www.archstl.org/education). Click on view Application and Instructions.

St. Raphael St. Vincent De Paul Conference - Household Items Needed

The St. Raphael SVdP Conference continues to be blessed by your generous support, enabling us to assist those within our parish boundaries who reach out for assistance. The bins in church are available for you to drop off non-monetary donations. If you are able to help, we have an immediate need for cleaning products such as:

- Laundry Soap
- Dish Soap
- All-purpose Household Cleaners
- Antibacterial Spray or Wipes
- Toilet Bowl Cleaners
- Paper Towels

We ask for your continued prayers for our neighbors in need and again want to express our gratitude for always answering the call.

The 76th Annual Outdoor Novena to Our Lady of Mount Carmel

This year's Novena extends **Saturday, July 13 to Sunday, July 21, 2024**. Rosary in the Chapel at 7:15pm; Benediction in the Chapel at 7:40pm; Mass on the grounds at 8:00pm.

Saturday, July 20, Fr. Robert Lawson, our new associate pastor, will be the celebrant of the Mass.



**SUMMER
CAMP
2024**



Care for Creation and Stewardship of the Earth

The Catholic Church has a well-documented tradition of Care for Creation and Stewardship of the Earth. We will feature resources intended to serve as an introduction on this issue. This is just one element of our Catholic teaching that highlights this tradition.

Global Climate Change: A Plea for Dialogue, Prudence, and the Common Good, 2001



“At its core, global climate change is not about economic theory or political platforms, nor about partisan advantage, nor interest group pressures. It is about the future of God’s creation and the one human family. It is about protecting both ‘the human environment’ and the natural environment. It is about our human stewardship of God’s creation and our responsibility to those who come after us.”

Our Parish Mission Statement

We, the parish of Saint Raphael the Archangel, celebrate Jesus as the center of our life. Through our active participation in the Eucharist, we strive to recognize Jesus in our daily lives and the lives of others. Our commitment is to grow as a parish family, and live this through our religious, educational, social, and civic involvements, witnessing to all, our faith in God the Father, Son, and Holy Spirit.



SPONSORSHIP OPPORTUNITIES

ENTERTAINMENT SPONSOR \$750

Includes 4 Picnic shirts which display your logo on the back along with your logo printed on the band banner placed on stage for all to see while enjoying our live entertainment!

GOLD SPONSOR \$500

Includes 4 Picnic shirts which display your logo on the back along with your large logo printed on the SRA 2024 picnic banner!

BLACK SPONSOR \$250

Includes 4 Picnic shirts which display your logo on the back along with your small logo printed on the SRA 2024 picnic banner!

Scan here
to purchase your
sponsorship



Questions?

Dave Wilkinson
314.458.5831

Friday, September 13 • 5-10pm & Saturday, September 14 • 11am-9pm
Saint Raphael School Parking Lot • 6000 Jamieson Avenue

CPR Class at SRA, Saturday, August 10, at 8:30am; SRA School Gym

Open to all St. Raphael and St. Gabriel parishioners, volunteers, and staff members (ages 16 and up); covers CPR education, rescue breaths, AED use for adults, children and infants, and choking for adults and infants. All of HeartEDU's trainers are American Heart Association Basic Life Support instructor-certified.

This is a four-hour course and the cost is \$40 per participant (payment due August 10, cash, check or Venmo). Who should take this course? Anyone who wants to know how to perform CPR and other basic cardiovascular life support skills.

We have space for 18 participants; if interested or have questions, please call the SRA parish office at 314.352.8100 by Monday, August 5, to enroll. Thank you.

HEARTEDU'S COURSE OBJECTIVES

01 DELIVERY OF HIGH-QUALITY COMPRESSIONS

- RECOGNIZE WHEN AND HOW TO PERFORM CPR ON AN ADULT, CHILD, AND INFANT
- UNDERSTAND IMPORTANCE OF DELIVERING HIGH-QUALITY COMPRESSIONS

02 HOW TO USE AN AED

- INCLUDES USE OF AN AED ON AN ADULT AND CHILD
- UNDERSTAND IMPORTANCE OF TIMELY AED USE

03 DELIVERY OF BREATHS

- LEARN HOW TO DELIVER EFFECT BREATHS BETWEEN COMPRESSIONS
- LEARN HOW TO USE A VENTILATION BARRIER DEVICE

04 CHAIN OF SURVIVAL AND TEAM DYNAMICS

- LEARN IMPORTANCE OF LEADERSHIP AND COMMUNICATION SKILLS DURING CPR
- UNDERSTAND THE ORDER IN WHICH TO PROVIDE CARE FOR AN ADULT AND CHILD

05 CHOKING RELIEF

- LEARN MANEUVERS TO RELIEVE CHOKING IN ADULT, CHILD, AND INFANT
- UNDERSTAND WHEN TO PROVIDE CHOKING RELIEF VERSUS CPR



heartedu23@gmail.com

AHA HEARTSAVER® CPR AED TRAINING COURSE

**HEARTEDU WILL PROVIDE ALL EQUIPMENT



Saint Raphael the Archangel
Watermelon Festival
Francis Park
Saturday, August 17, 2024

Event Schedule Coming Soon:
Pickleball | Drinks | Food | Kids Activities | Fun & More!

Questions: Derek Winters @ dwinters21@gmail.com



JULY 2024

SUN	MON	TUE	WED	THU	FRI	SAT
	1 	2	3 AYM R & R Night! <small>Recharge & Reconnect</small>	4 HAPPY 4TH OF JULY	5	6
7 NATIONAL EUCHARISTIC PILGRIMAGE <small>Cathedral Basilica to St. Stephen Protomartyr</small>	8	9 Steubenville Mtg. <small>(attending teens only)</small>	10 AYM R & R Night! <small>Recharge & Reconnect</small>	11	12 13 STEUBENVILLE 2024!	
14 STEUBENVILLE 2024!	15	16	17 AYM R & R Night! <small>Recharge & Reconnect</small>	18	19	20
21 AYM Life Teen Night!	22	23	24 AYM R & R Night! <small>Adoration</small>	25	26	27
28 AYM Life Teen Night!	29	30	31 AYM R & R Night! <small>Movie Night!</small>			

[Welcome to ARCHANGEL YOUTH MINISTRY \(AYM\)](#) covering the parishes of the St. Louis Hills neighborhood (St. Gabriel & St. Raphael). **AYM** is open to all high school teens. No signup necessary and teens do not need to be from the St. Louis Hills parishes to participate. High schoolers (incoming Freshmen through Seniors) can attend on a regular basis or drop in as it fits their schedules.

Sunday evenings (6:45-8:30pm in Gabriel House) include snacks, socializing, games, talks, and discussions. Teens are encouraged to bring a friend to share in the fun.

SUMMER PROGRAMMING

Remember, until the end of August, AYM will offer 2 nights each week for teens to participate in activities.

*Sunday evenings will be Life Teen nights from 6:45-8:30pm.

*Wednesday evenings will be "R & R" nights (Recharge & Reconnect) from 7-8:30pm. Activities will vary week-to-week but will mostly be a time to relax, play games, hang out, etc. Adoration (with music from a Spotify playlist) will be offered on July 24 and August 21.

LOOKING AHEAD:

*No AYM tonight, July 14, since we will be returning from the Steubenville Conference. We look forward to seeing you at R&R on Wednesday, July 17.

*Middle School & High School Movie Night! | **July 31** | Open to incoming 6th through recently graduated 12th graders | 7:00pm in Gabriel House

STAY CONNECTED with AYM

Follow us on Instagram @archangelym

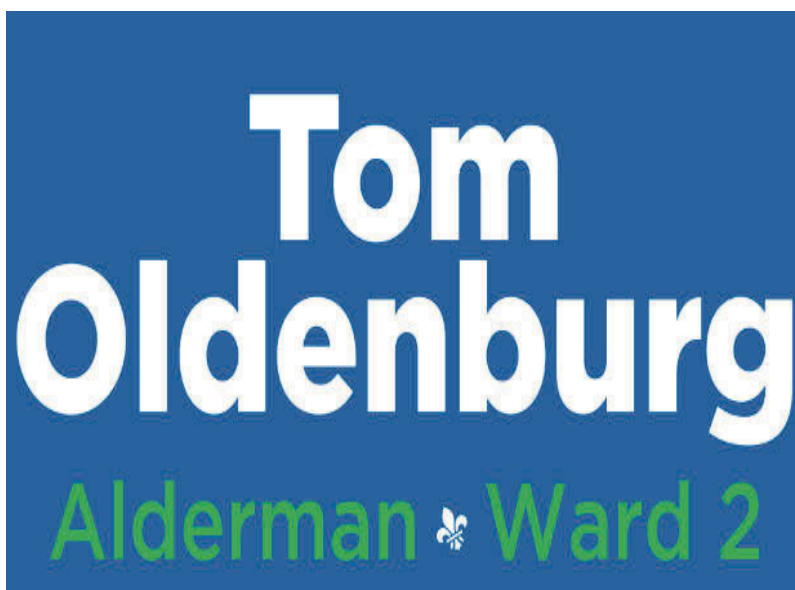
Like our Facebook Group: Archangel Youth Ministry

Join the SGA or SRA Flocknote Group: Youth Ministry

Visit the Youth Group page on the SGA parish website

Contact Youth Minister: Sarah Henderson - hendersons@stgabrielstl.org

PROUD SPONSORS OF THE BLACK & GOLD DINNER AUCTION!





(314) 481-7333

Since 1927

Bartolino's Family Restaurants



2103 Sulphur Ave. St. Louis, MO 63139



5914 So. Lindbergh St. Louis, MO 63123

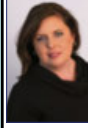


5980 Southwest Ave. St. Louis, MO 63139



100 N. Tucker Blvd. St. Louis, MO 63101

bartolinosrestaurants.com



Jennifer Lueken Delf
Sales Associate

314-323-6073 Cell
314-965-3030 Office
314-965-2858 Fax
jennifer.delf@cbgundaker.com
421 South Kirkwood Road
Kirkwood, MO 63122
jenniferdelf.cbintouch.com



Operated by a subsidiary of NRT LLC.



IMO'S PIZZA

832-9677

5806 Hampton Avenue
CARRY OUTS & DELIVERY

WE'RE HIRING!

AD SALES EXECUTIVES

BE YOURSELF.
BRING YOUR PASSION.
WORK WITH PURPOSE.

- Paid training
- Some travel
- Work-life balance
- Full-Time with benefits
- Serve your community



Contact us at
careers@4lpi.com or
www.4lpi.com/careers



Karen Majda
REALTOR® GRI

(314) 574-2560
(314) 353-8888

Wood Brothers Realty
6500 Chippewa St. Fl 1
Saint Louis, MO 63109



KleeKamp Insurance Group

For your Auto, Home and
Life Insurance needs.

Call
314-644-1500

Place Your Ad Here and Support our Parish!

Instantly create and purchase an ad with

AD CREATOR STUDIO



4lpi.com/adcreator

SUPPORT OUR ADVERTISERS!



SUPPORT OUR PARISH



Enjoying life is what it's all about at

Tower Grove Manor

We have garage parking, plus lovely apartments with walk-in closets, full kitchens, and great views of Tower Grove Park and the skyline. More amenities, activities and only minutes from theatres, the Botanical Garden, and the best healthcare.

2710 S. Grand Blvd.
St. Louis, MO 63318
Tel. 314-773-2800
www.towergrovemanager.org



TREE & LAWN CARE EXPERTS SINCE 1880

\$20 OFF

Tree Pruning/Removal/Fertilization
(314) 961-5440 | www.davey.com



- FIELDER - ELECTRICAL SERVICES, INC.

LICENSED • BONDED • INSURED

RESIDENTIAL • COMMERCIAL • INDUSTRIAL

Service Upgrades • New Homes • Remodeling • Room Additions • Basements • Kitchens
Bathrooms • Code Violations • Knob & Tube Upgrades • Back Up Generator Systems

\$20 OFF

Any Electrical Work of \$100 or more

314-966-3388



Climate Control & Drive Up Units Available
No Fees. Gated Facility 24/7 Access
Seniors & Military 10% off
Second Month Free. Closed Circuit Security
metrostoragemo.com
2729 HEREFORD ST. • 314-312-2020
LOCATED ON THE HILL OFF ARSENAL

Paul Karasek Since 1954

BRUNETTI / PESC-CO., INC.
Professional Exterminating Service & Chemical CO.

200 S. Elam
Valley Park, MO 63088

314-487-2208 1-888-220-BUGS

LET'S GROW YOUR BUSINESS

Place Your Ad Here and Support Our Parish!

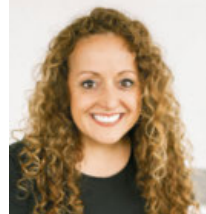
CONTACT ME
Iris Mitchell

imitchell@4LPi.com

(800) 950-9952 x2495



cell 314.973.3319 • www.garciastl.com
anna@garciaproperties.com



OPEN EVERY DAY FOR DINE IN & PICK UP



314.436.3742

Sun - Thurs: 11am - 10:30pm
Fri - Sat: 11am - 1:30am
1711 South 9th Street



Commercial & Residential

(314) 487-4564



5300 Hampton Avenue
St. Louis, MO 63109

Phone: 314.379.5082

Fax: 314.379.5115

sthillautoservice53@yahoo.com



Residential & Commercial
GLASS REPLACEMENT

Most Insulated Units in 24 Hours
Mirrors • Table Tops
Insulated Glass • Window Parts • Safety Glass
314-352-2200 | gravoisglass@aol.com
6825 Gravois Ave. St. Louis 63116



For ad info. call 1-800-950-9952 • www.4lpi.com

St Raphael the Archangel - Saint Louis, MO

B 4C 01-1608

Scott R. Holdridge, Agent
Call or Email me Today!
Bus: 314-664-5433
 scott@scottholdridge.com
 scottholdridge.net

I can help you with your Insurance, Banking and Financial Services Needs



HOFFMEISTER COLONIAL MORTUARY
Helping people is our business.

Conveniently located at
 6464 Chippewa in St. Louis Hills



www.hoffmeistercolonial.com • 314.832.7770



Judy McNamara
 3304 Watson Road
 St Louis, MO 63139
 314-781-2290

www.judymcnamara.com

Place Your Ad Here and Support our Parish!

Instantly create and purchase an ad with

AD CREATOR STUDIO



4lpi.com/adcreator



Specializing In Older Home Repairs

314-752-1101

St. Louis, MO

SHORT STAFFED?

Place an ad here to find new local talent for your business.



CALL

800-950-9952



Good Neighbors, Good Advice

Steve, Brian, Sean, Gary, & Allison
 6401 Hampton Avenue, St. Louis, MO 63109
southsidetruevaluehardware@gmail.com

SouthsideHardware.com 314-351-0204



Dr. Catherine Saracino
 DMD, MSD, MS

ORTHODONTIST

Braces • Invisalign • Whitening
 314.649.8999 | Saracinoorthodontics.com
 6555 Chippewa St., Suite 200
 St. Louis, MO 63109



CATHOLIC SUPPLY
 OF ST. LOUIS, INC.

Religious Gifts, Books & Church Supplies Since 1960

ST. LOUIS HILLS
 6759 Chippewa St
 St. Louis, MO 63109
 (314) 644-0643

O'FALLON MO
 2985 Hwy K (at Hwy N)
 O'Fallon, MO 63368
 (636) 379-3705

catholicsupply.com



FREE AD DESIGN

with purchase of this space

CALL 800-950-9952

LET'S GROW YOUR BUSINESS

Place Your Ad Here and Support Our Parish!

CONTACT ME Iris Mitchell

imitchell@4LPi.com
 (800) 950-9952 x2495

JAMES LEGRAND



4414 Donovan
 314-353-6128

legrandsmarket-catering.com

LeGrands Market & Catering



Loyalty LAWN CARE
 A Green Group® Company.

loyaltylawncares.com (636) 306-3671

**Fertilization
 Weed Control
 Aeration
 Seeding**

IF YOU LIVE ALONE

MDMedAlert!™ As Low As

\$19⁹⁵ /mo.

✓ Ambulance ✓ Police/Fire
 ✓ Family/Friends ✓ GPS & Fall Alert

CALL NOW! 800.808.9294

md-medalert.com



Celebrate life with faith and friends at The Sarah Community!

12284 DePaul Drive
 Bridgeton, MO 63044
 314-209-7000

TheSarahCommunity.com | [TheSarahCommunity](https://www.facebook.com/TheSarahCommunity)

LET'S GROW YOUR BUSINESS

Place Your Ad Here and Support Our Parish!

CONTACT ME Iris Mitchell

imitchell@4LPi.com
 (800) 950-9952 x2495

Kutis FUNERAL HOME

2906 GRAVOIS
 772-3000

10151 GRAVOIS
 842-4458

5255 LEMAY FERRY
 894-4500

Come See the New Ford Car Deals in St. Louis



Mon, Wed, Fri: 8:30am-8pm
 Tues, Thurs: 8:30am-6pm
 Sat: 9am-5pm

3300 South Kingshighway
 St. Louis, MO 63139
314-664-4100



KITTNER REAL ESTATE GROUP

angelakittner.com | 314-775-2745



For ad info. call 1-800-950-9952 • www.4lpi.com

St Raphael the Archangel - Saint Louis, MO

A 4C 01-1608