



SAINT RAPHAEL THE ARCHANGEL

CATHOLIC CHURCH

MARCH 23, 2025 THIRD SUNDAY OF LENT




WELCOME!

VISIT OR CONTACT US


6047 Bishops Place
Saint Louis, MO 63109

314.352.8100
straphaelarchangel.org

Mon.-Thu. | 7:30am-4:00pm
Fri. | 7:30am-12:00pm

 @SRAtoday

 @SRAtoday

 straphaelarchangel

SCHOOL INFORMATION

6000 Jamieson Avenue
Saint Louis, MO 63109

314.352.9474 | 314.351.7477 (Fax)

Mon.-Fri. | 7:00am-3:00pm

MASS SCHEDULE

WEEKEND MASS

Saturday | 7:00am, 4:30pm
Sunday | 9:00am

WEEKDAY MASS

Mon. - Fri. | 8:00am

CONFESSION

Monday - Friday | 7:30am
Saturday | 3:30pm
Other | By Appointment

CHURCH OPEN FOR PRIVATE PRAYER

Mon.-Fri. | 8:00am-2:00pm
Saturday | 8:00am-4:30pm

PARISH CLERGY

Fr. Thomas Molini, Pastor
thomasmolini@archstl.org

Fr. Robert Lawson, Associate Pastor
robertlawson@archstl.org

LAY LEADERSHIP

Brian Klos, Pastoral Council
bcklos@gmail.com

Liz Murphey, School Board
schoolboard@straphaelarchangel.org

Joseph Cyr, Finance Council
314.335.7322

Jacqueline Ilg, HSA President
hsa@straphaelarchangel.org

PARISH STAFF

Ray and Mary Anne Braun, Music
Ministers
Braun@straphaelarchangel.org

Diane Halbert, Parish Office
Manager
halbert@straphaelarchangel.org

Mickey Janos, Admn. Assistant
janos@straphaelarchangel.org

Pam Hager, Parish Support Staff/
Child Safety Coordinator
hager@straphaelarchangel.org

Robert Schlueter, Maintenance

Julie Hayes, School Principal
hayes@straphaelarchangel.org

Kathy Shaver, School Secretary
secretary@straphaelarchangel.org

Qi Franz, Cafeteria Manager
franz@straphaelarchangel.org

Sarah Henderson, Youth Minister
hendersons@stgabrielstl.org

MARCH 23, 2025 THIRD SUNDAY OF LENT

The Lord is kind and merciful

The psalm for this Sunday sums up the sentiment of the Scriptures as both an affirmation of faith and a call to conversion. The call of Moses relies heavily on the compassion of God who does not even consume the bush as it burns, reflecting His mercy toward Israel. Through the leadership of Moses, God will redeem His people and bring them from slavery to freedom. His will shall be accomplished despite the hard-heartedness of the people. God's mercy shall be shared.

In our Gospel, Jesus dismisses the application of guilt to those who die a sudden death as if their sins were greater. Rather, the Lord calls all who hear to repentance for we all stand in need of forgiveness. His mercy is manifest in the opportunity to repent, now, in this time. The fruitless tree is not cut down but given help to produce. Jesus offers us assistance in our repentance. The Sacraments, the teachings of Mother Church, the support of the community are all provided for our growth in holiness.

This weekend offers a small shift in the Lenten Season. With the Third Sunday, those preparing for admission to the Catholic Church, our catechumens and candidates, participate in the First Scrutiny. This is a public act of requesting entry to the Catholic Community and is made in the presence of the congregation. This will be celebrated this Sunday and next at St. Raphael at the 9:00am Mass, and on the Fifth Sunday of Lent at St. Gabriel at the 10:00am Mass. Please continue to pray for these women and men as they complete their preparations. As a side note, the Mass celebrating the Scrutiny will use a different set of Lenten Readings that highlight even more our call to conversion.

Reconciliation

As a reminder, the Sacrament of Reconciliation (Confession) is available each weekday at 7:30 am before the 8 am Mass. Additionally, confessions are heard before the Saturday afternoon Mass.

To provide additional opportunity for this Sacrament, confessions will also be heard:

April 8, Tuesday 7:00pm until all are heard at St. Gabriel

April 10, Thursday 7:00pm until all are heard at St. Raphael

Please plan on making a good Lenten confession and enjoying the mercy of God.

Talks on the CREED

Fr. Lawson is continuing his talks on the Nicene Creed each Wednesday of Lent beginning at 6:30pm in church at St. Gabriel. Stations of the Cross follow.

Remaining talks: 3/26 - For our sake He was crucified...

4/2 - I believe in the Holy Spirit...

4/9 - I believe in One, Holy, Catholic, and Apostolic Church...

On April 16, St. Gabriel will host the "Shadow Stations" sponsored by the Youth Ministry team, beginning at 8:00pm in the evening.

Save the Date!

2025 Archangel ACTS Retreats

MEN

August 14 - 17

Director: Russ Smith (314.223.9772)

WOMEN

December 4 - 7

Director: Kathy Daily (314.803.0875)



Sunday, March 23
9:00am Jeff Kreitler

Monday, March 24
8:00am Hodes Family, SI

Tuesday, March 25
8:00am Liddy Family

Wednesday, March 26
8:00am Christopher Ellison

Thursday, March 27
8:00am William G. Rossfeld

Friday, March 28
8:00am Ernest J. Winkelmann

Saturday, March 29
7:00am Sam and Dorothy Lawson
4:30pm Joseph Bick

Sunday, March 30
9:00am Dan Harbaugh

"He said to the gardener, 'For three years now I have come in search of fruit on this fig tree but have found none.'" Luke 13:7

We can all be like the barren fig tree at times. Do we cling to what we have, or do we generously share with others? How will we respond when God asks what have we done with all the gifts He has given us? Remember, not only are we called to be generous, but we are also called to develop and nurture our gifts and return them with increase. We are called to be generous with all of our gifts, especially the one we value most.

Your Contributions to God and Parish

March 16, 2025 (Envelopes Used)	This Week	Year-to-Date
Regular Env. (31)	\$ 3,780	\$ 155,281
Loose Money	\$ 1,362	\$ 79,038
School Support	\$ 230	\$ 7,183
Building Fund	\$ 5	\$ 6,395
Holy Days	\$ 0	\$ 9,137
Online Giving (54)	\$ 3,792	\$ 110,726
Catholic Relief	(\$ 103)	
Black & Indian Ms.	(\$ 70)	
European Churches	(\$ 105)	
ProLife	(\$ 150)	
Easter Flowers	\$ 128	
Candle Money	\$ 10	
Lenten Projects	(\$ 2,696)	
Grand Total	\$ 12,431	
Total for Parish	\$ 9,307	\$ 374,529
Amount Needed	\$ 10,000	\$ 380,000
Difference	<u>(\$ 693)</u>	<u>(\$ 5,471)</u>
FYE 2024		<u>(\$ 17,741)</u>

St. Vincent de Paul

It begins with that first phone call from our neighbors in need. How hard it must be to reach out for our assistance. Our neighbors come to us for a simple transaction: paying a utility bill or helping with the rent. It is from that time forward that we have the opportunity to really listen to them and see how we might assist them in more meaningful ways. When we help our neighbors in need, we see the face of Christ and we are the face of Christ. We strive to make a difference in their lives that will last forever. Thank you for assisting us with our mission.



This weekend's Sacred Scripture readings:

Sunday, March 23:
Ritual Song: No. 1124
Pray Together: Page 107



ALTAR SERVERS

SERVERS FOR MARCH 24 - 30, 2025

Monday, March 24

8:00am	Frank Koziacki	Vivien Smith
	Elliot Ottenad	

Tuesday, March 25

8:00am	Henry Dirnbeck	Delilah Gore
	Mollie Dirnbeck	

Wednesday, March 26

8:00am	Harper Bradshaw	Francie Berry
	Sophia Bradshaw	

Thursday, March 27

8:00am	Paddy Meier	Kerry Mense
	Sean Meier	

Friday, March 28

8:00am	Ava Christlieb	Kate Ilg
	Olivia Wegman	

Saturday, March 29

4:30pm	Mark Boeckmann	Clara Thompson
	Genevieve Montoya	

Sunday, March 30

9:00am	Christian Bernadt	Caleb Bernadt
	Stassi Boxdorfer	

LECTORS/MINISTERS FOR THE WEEKEND OF MARCH 29 - 30, 2025

LECTORS

4:30pm	9:00am
Greg Heuing	Barbara Cramer

Extraordinary Ministers

Pam Hager	John Rooney
George Kerry	Krissy Sullivan
Mary Steck	Gerald Unger
Elena Switzer	Marilyn Unger

UPCOMING EVENTS

Monday, March 24

8:00am	Church	Mass
6:00pm	Cafeteria	3rd Gr. Girl Scouts
6:30pm	Fireplace Rm.	St. Vincent de Paul
7:00pm	Raphael Rm.	Knights of Columbus
7:00pm	School	School Board

Tuesday, March 25

8:00am	Church	Mass
6:30pm	St. Gabriel	Talks on the Creed

Wednesday, March 26

7:30am	Church	Rosary
8:00am	Church	Mass
7:00pm	Gym	Basketball Practice
7:30pm	Church	So. City Men's Recollection
8:30pm	Gym	Old Man Basketball

Thursday, March 27

8:00am	Church	Mass
2:00pm	Cafeteria	Dance Class
7:00pm	Cafeteria	Ladies' Club

Friday, March 28

7:30am	Church	Rosary
8:00am	Church	Mass
9:30am	Church	K - 3rd Gr. Stations of the Cross
12:00pm	Church	Adult Stations of the Cross
12:45pm	Church	4th-5th Gr. Stations of the Cross
2:45pm	Church	6th-8th Gr. Stations of the Cross
4:00pm	Cafeteria	Fish Fry

Saturday, March 29

7:00am	Church	Mass
8:00am	Church	Music Ministry Rehearsal
10:00am	Cafeteria	Pinewood Derby
4:30pm	Church	Mass
5:45pm	Various	Progressive Dinner

Sunday, March 30

9:00am	Church	Mass
6:00pm	Gym	Cotillion Meeting

DAILY READINGS

Sunday	Ex 3:1-8a, 13-15/Ps 103:1-2, 3-4, 6-7, 8, 11 (8a)/1 Cor 10:1-6, 10-12/Lk 13:1-9 <i>Scrutiny:</i> Ex 17:3-7/Ps 95:1-2, 6-7, 8-9 (8)/Rom 5:1-2, 5-8/Jn 4:5-42 or 4:5-15, 19b-26, 39a, 40-42
Monday	2 Kgs 5:1-15b/Ps 42:2, 3; 43:3, 4/Lk 4:24-30
Tuesday	Is 7:10-14; 8:10/Ps 40:7-8a, 8b-9, 10, 11/Heb 10:4-10/Lk 1:26-38
Wednesday	Dt 4:1, 5-9/Ps 147:12-13, 15-16, 19-20/Mt 5:17-19
Thursday	Jer 7:23-28/Ps 95:1-2, 6-7, 8-9/Lk 11:14-23
Friday	Hos 14:2-10/Ps 81:6c-8a, 8bc-9, 10-11ab, 14 and 17/Mk 12:28-34
Saturday	Hos 6:1-6/Ps 51:3-4, 18-19, 20-21ab/Lk 18:9-14
Next Sunday	Jos 5:9a, 10-12/Ps 34:2-3, 4-5, 6-7 (9a)/2 Cor 5:17-21/Lk 15:1-3, 11-32 <i>Scrutiny:</i> 1 Sm 16:1b, 6-7, 10-13a/Ps 23:1-3a, 3b-4, 5, 6 (1)/Eph 5:8-14/Jn 9:1-41 or 9:1, 6-9, 13-17, 34-38

SAVE THE DATE



SRA DAY OF SERVICE



SATURDAY, APRIL 26

MOST HOLY TRINITY | ST. RAPHAEL | IMMIGRANT AND REFUGEE MINISTRY
MORE DETAILS TO COME.

LAUDATO SI SPEAKERS SERIES



Jean Ponzi
MO Botanical Garden



CLIMATE ACTION
WED APRIL 2 @ 6:30PM

St. Cletus Church
2705 Zumbuhl Rd
St. Charles, MO 63301



What is it?

90+ prizes are on display.
Hold up your paddle to bid on items.
If your number is called, you win!

Exquisite Raffle

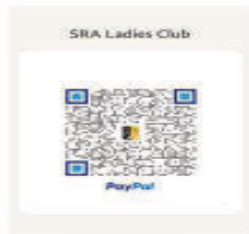
Purchase special raffle tickets for
high valued items



One 50/50 Raffle



*Attendees must be 18+ years old
Bring your own food and drinks!*



Payments

Use PayPal for
table reservations
@sraladiesclub
*Square will be
available at event*

Paddle Options:



"All In" paddle is \$30
You are in EVERY Raffle.

-or-

"Basic" paddle is \$10 and
add a quarter to bid on an item/s.

Table Options:

"All In" table of 8 for \$240
Includes 8 "All In" paddles

-or-

"Basic Table" of 8 for \$80
Includes 8 "Basic" paddles.

*Individuals can upgrade to

"All In" paddle for \$20 at the door**

-or-

Walk in...at your own risk!

To reserve a table, pay and email:

ladies@straphaelarchangel.org

SRA LADIES' CLUB QUARTER AUCTION APRIL 11, 2025

The Club is soliciting new or unused items. Below are some donation suggestions. Please deliver any items to the parish office.

- Gift Certificates
- Event Tickets
- Purses
- Jewelry
- Beauty/Healthcare Projects
- Self-Care Items
- Organization Tools
- Memberships/Passes
- Outdoor Games
- Board Games
- SRA Branded Items
- Sport/Exercise Equipment



- Camping Equipment
- Sports Memorabilia
- Wine, Beer, Spirits
- Kitchen Items/Small Appliances
- Water Bottles/Thermal Cups
- Home Goods/Decorations
- Electronics
- Holiday Décor/Items
- Glassware/Barware
- Candles
- Non-perishable Food Baskets
- Lottery Scratch-off Tickets



Please Join Us on March 29, 2025 for The Annual SRA

Progressive Dinner Party



A night of Food, Fun, & Fellowship for \$30 per person
(fees waived for host houses)

How Does a Progressive Dinner Work?

You will be contacted in the week before with a house to go to for Appetizers
After Appetizers your host will inform you where to go for Dinner
Dessert and Fun to follow at The Braun's

Questions?

Contact Ellen Pendry at ellenpendry@gmail.com or (314) 229-9243

Reservations Required

Detach and return the below form by March 24, 2025

I Can't Wait for the Progressive Dinner Party

RSVP and Payment can be dropped off at the Rectory or School Office in care of Ellen Pendry
Make checks payable to SRA Ladies' Club

I would like to:

Host an Appetizer _____ Host a Dinner _____ Drop off a Dessert _____

Number of Attendees _____

Name of Attendees _____

Address _____

Contact Info _____

Host volunteers will be contacted with more information



SRA Lenten Project...Our Lady's Inn and Prison Ministries

Please contribute to this year's Lenten project that benefits two charities: Our Lady's Inn Maternity Home in St. Louis (Dutchtown), and the prison ministries in both the Pacific Correctional Center and the Residents Encounter Christ retreat program.

- Our Lady's Inn Maternity Home helps those moms who may have been homeless or experienced housing insecurity and are making life-affirming decisions for their child. Our Lenten project will help these women and their children by providing laundry baskets and goodie bags with much needed necessities. Items needed are:

Shower gel or body wash	Hairbrushes/combs
Household supplies/paper products	Boxes of cake and brownie mix
Baby shampoo/lotion/baby wash	Kitchen and hand towels
Adult coloring books or journals and colored pencils	Individual snacks for lunches
Individual snacks for lunches	Laundry detergent
Gift cards to Walmart or fast food places	



There are baby gift bags in Church, one under the Blessed Mother statue and one under the St. Joseph statue; please put any of these donated items in the bags now and up through Sunday, April 6, 9:00am Mass.



- Through our financial donation given to the Pacific Correctional Center and the Residents Encounter Christ retreat program, we are helping those who are conducting retreat programs and administering the Sacraments to those incarcerated. The incarcerated will personally encounter Jesus Christ from those who visit. We have been told that these encounters are "...beneficial to the incarcerated and a blessing to their families."
- Envelopes for this portion of the Lenten project are included in the pews (cash or checks); envelopes can be put in the collection basket or taken to the SRA parish office. If you prefer online giving, look for "Lenten Project" as a donation option.

If you have any questions, please contact the parish office at 314.352.8100. By your support, we are practicing three of the Corporal Works of Mercy (sheltering the homeless, visiting those in prison, and giving alms to the poor) that we as Catholics are called to do...a work of justice that is pleasing to God. Thank you for your generosity; to date, financial donations total \$3,788.



The CRS Lenten calendar guides families throughout the 40 days of Lent with activities, reflections, stories, and opportunities to put alms in their rice bowl. Combined, the rice bowl and calendar are staples on the table of Catholic families across the country each Lent.

SRA FISH FRY
Desserts Needed!
DROP OFF DESSERTS ON
FRIDAY, 3/28 AFTER 12 PM
SCHOOL CAFETERIA
PRECUT DESSERTS IF POSSIBLE!



ST. RAPHAEL

FISH FRY



FRIDAY, MARCH 28 4-7PM

DINE IN OR CARRY OUT • CASH OR CARD

SCHOOL CAFETERIA • 6800 JAMIESON AVENUE

DINNERS \$14

Includes 2 sides, bread, dessert, tea or lemonade

Fried Cod

Baked Cod

Fried Shrimp (6 pc)

SIDES

Mac & Cheese

Green Beans

Fries

Cole Slaw

KIDS \$7

Includes 1 side, dessert, tea or lemonade

Cod

Cheese Pizza

Mac & Cheese

A LA CARTE

Cod filet \$5

Shrimp (3 pc) \$5

Pizza \$3

Sides \$2

Dessert \$1

Soda, Beer and Wine available for purchase.



SRA STUDENT MASS ATTENDANCE CONTEST!

Classes are competing to see which can average the highest attendance at weekend Mass during Lent!



PARENTS! Scan here to register your student's attendance at SRA or any other parish!



BIG CHANGES TO ARCHANGEL YOUTH MINISTRY (AYM)!

AYM has moved to St. Raphael the Archangel in the parish office lower level! We are so excited for this opportunity to continue meeting in a new space and to become more involved with St. Raphael parish! We are currently preparing for the Luke 18 Retreat so our *Life Teen* (Sunday) and R&R (Wednesday) nights will be on hold for the months of March and April, but we look forward to welcoming everyone back in May.

LOOKING AHEAD

- *April 16 | AYM leads Silhouette Stations of the Cross at SGA church
- *April 19 | St. Louis Hills Easter Egg Hunt in Francis Park (Service hour opportunity.)
- *April 25-27 | Luke 18 Retreat! | for 8th graders, led by high school teens
- *May 4 | Life Teen Nights Return!
- *June 14 | SGA Block Party! (Service hour opportunity.)
- *July 18-20 | AYM at Steubenville 2025!

STAY CONNECTED WITH AYM

Follow us on Instagram @archangelym
 Like our Facebook Group: Archangel Youth Ministry
 Join the SGA or SRA Flocknote Group: Youth Ministry
 Visit the Youth Group page on the SGA parish website
 Contact Youth Minister: Sarah Henderson - hendersons@stgabrielstl.org

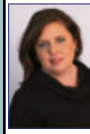


Sunday	Monday	Tuesday	Wednesday	Thursday	Friday	Saturday
Please Note: Beginning March 2nd, AYM will meet in St. Raphael's Rectory Basement. This will be AYM'S home until further notice.						1
2 Moving Day! 	3 Luke 18 Retreat & Stations of the Cross Registrations DUE!	4	5 Ash Wednesday 	6 AYM R & R Night Recharge & Reconnect	7 	8
9 Luke 18 Mtg. Team Members (#1)	10 Stations Practice (#1)	11	12	13	14 	15
16 NO AYM Spring Break	17 	18	19	20 hello Spring 	21 	22
23 Teen Mass & Luke 18 Mtg. Team Members (#2)	24 Stations Practice (#2)	25 The Annunciation of the Lord 	26	27	28 	29
30 Luke 18 Mtg. Team Members (#3)	31 Stations Practice (#3)					



(314) 481-7333
Since 1927

Bartolino's
Hospitality Group
Bartolino's Bartolino's Bartolino's
Chris Chris
Cook good food & give plenty.
bartolinosrestaurants.com



Jennifer Lueken Delf
Sales Associate
314-323-6073 Cell
314-965-3030 Office
314-965-2858 Fax
jennifer.delf@cbgundaker.com
421 South Kirkwood Road
Kirkwood, MO 63122
jenniferdelf.cbintouch.com
Operated by a subsidiary of NRT LLC.



IMO'S PIZZA
832-9677
5806 Hampton Avenue
CARRY OUTS & DELIVERY

WE'RE HIRING!
AD SALES EXECUTIVES

BE YOURSELF.
BRING YOUR PASSION.
WORK WITH PURPOSE.

- Paid training
- Some travel
- Work-life balance
- Full-Time with benefits
- Serve your community



Contact us at
careers@4lpi.com or
www.4lpi.com/careers



Karen Majda
REALTOR® GRI
(314) 574-2560
(314) 353-8888

Wood Brothers Realty
6500 Chippewa St. Fl 1
Saint Louis, MO 63109



Climate Control & Drive Up Units Available
No Fees. Gated Facility 24/7 Access
Seniors & Military 10% off
Second Month Free. Closed Circuit Security
metrostoragemo.com
2729 HEREFORD ST. • 314-312-2020
LOCATED ON THE HILL OFF ARSENAL

Paul Karasek Since 1954

BRUNETTI / PESC-CO., INC.
Professional Exterminating Service & Chemical CO.

200 S. Elam
Valley Park, MO 63088

314-487-2208 1-888-220-BUGS

- FIELDER - ELECTRICAL SERVICES, INC.
LICENSED • BONDED • INSURED RESIDENTIAL • COMMERCIAL • INDUSTRIAL
Service Upgrades • New Homes • Remodeling • Room Additions • Basements • Kitchens
Bathrooms • Code Violations • Knob & Tube Upgrades • Back Up Generator Systems
\$20 OFF Any Electrical Work of \$100 or more **314-966-3388**

SUPPORT OUR ADVERTISERS!

SUPPORT OUR ADVERTISERS!



Enjoying life is what it's all about at
Tower Grove Manor
We have garage parking, plus lovely apartments with walk-in closets, full kitchens, and great views of Tower Grove Park and the skyline. More amenities, activities and only minutes from theatres, the Botanical Garden, and the best healthcare.

2710 S. Grand Blvd.
St. Louis, MO 63318
Tel. 314-773-2800
www.towergrovemanoir.org



TREE & LAWN CARE EXPERTS SINCE 1880
\$20 OFF
Tree Pruning/Removal/Fertilization
(314) 961-5440 | www.davey.com

DOES YOUR NONPROFIT ORGANIZATION NEED A NEWSLETTER?

Engaging, ad-supported print and digital newsletters to reach your community.

Visit lpicommunities.com

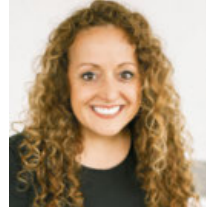


ROSATI-KAIN ACADEMY
Catholic. All-Girls. College-Prep.
APPLY NOW

Educating women to lead and serve the world!

www.rosati-kain.org / 4389 Lindell Blvd, St. Louis, MO 63108

ANNA GARCIA
garcia PROPERTIES
cell 314.973.3319 • www.garciastl.com
anna@garciaproperties.com



OPEN EVERY DAY FOR DINE IN & PICK UP



314.436.3742
Sun - Thurs: 11am - 10:30pm
Fri - Sat: 11am - 1:30am
1711 South 9th Street



Commercial & Residential
(314) 487-4564

GRAVOIS GLASS
Residential & Commercial
GLASS REPLACEMENT

Most Insulated Units in 24 Hours
Mirrors • Table Tops
Insulated Glass • Window Parts • Safety Glass
314-352-2200 | gravoisglass@aol.com
6825 Gravois Ave. St. Louis 63116



For ad info. call 1-800-950-9952 • www.4lpi.com

St Raphael the Archangel - Saint Louis, MO

B 4C 01-1608

Scott R. Holdridge, Agent
Call or Email me Today!
Bus: 314-664-5433
 scott@scottholdridge.com
 scottholdridge.net

I can help you with your Insurance, Banking and Financial Services Needs



HOFFMEISTER COLONIAL MORTUARY
Helping people is our business.

Conveniently located at
 6464 Chippewa in St. Louis Hills



www.hoffmeistercolonial.com • 314.832.7770



Judy McNamara
 3304 Watson Road
 St Louis, MO 63139
 314-781-2290

www.judymcnamara.com

Place Your Ad Here and Support our Parish!

Instantly create and purchase an ad with

AD CREATOR STUDIO



4lpi.com/adcreator



New Construction, Additions, & Garages

STL BUILD CO. 314-329-4955

build@stlbuildco.com • www.stlbuildco.com

SOUTH SIDE HARDWARE
Family Owned & Operated Since 1925

Good Neighbors, Good Advice

Steve, Brian, Sean, Gary, & Allison
 6401 Hampton Avenue, St. Louis, MO 63109
southsidetruevaluehardware@gmail.com

SouthsideHardware.com 314-351-0204



Specializing In Older Home Repairs

314-752-1101

St. Louis, MO

SARACINO
Dr. Catherine Saracino
 DMD, MSD, MS
ORTHODONTIST
Braces • Invisalign • Whitening
 314.649.8999 | Saracinoorthodontics.com
 6555 Chippewa St., Suite 200
 St. Louis, MO 63109

CATHOLIC SUPPLY
 OF ST. LOUIS, INC.
 ST. LOUIS HILLS | (314) 644-0643
 6759 Chippewa | St. Louis, MO 63109
 Mon-Sat 9:00am to 5:30pm
 ST. CHARLES COUNTY | (636) 379-3705
 2985 Hwy K | O'Fallon, MO 63368
 Mon-Sat 10:00am to 5:30pm
catholicsupply.com

FREE AD DESIGN
 with purchase of this space
CALL 800-950-9952

DOES YOUR NONPROFIT ORGANIZATION NEED A NEWSLETTER?
 Engaging, ad-supported print and digital newsletters to reach your community.
OUR COMMUNITY NEWSLET
 OCTOBER EDITION
 Scan to contact us!
[Visit lpicommunities.com](http://Visitlpicommunities.com)

JAMES LEGRAND
 4414 Donovan
 314-353-6128
legrandsmarket-catering.com
LeGrands Market & Catering

Loyalty LAWN CARE
 A Green Group Company.
Fertilization Weed Control Aeration Seeding
loyaltylawnare.com (636) 306-3671

IF YOU LIVE ALONE
MDMedAlert!™ As Low As **\$19⁹⁵** /mo.
 ✓ Ambulance ✓ Police/Fire
 ✓ Family/Friends ✓ GPS & Fall Alert
CALL NOW! 800.808.9294
md-medalert.com

Celebrate life with faith and friends at The Sarah Community!
THE SARAH COMMUNITY
 12284 DePaul Drive, Bridgeton, MO 63044
 314-209-7000
TheSarahCommunity.com | [TheSarahCommunity](https://www.facebook.com/TheSarahCommunity)

LET'S GROW YOUR BUSINESS
 Place Your Ad Here and Support Our Parish!
CONTACT ME Iris Mitchell
imitchell@4LPi.com
 (800) 950-9952 x2495

Kutis FUNERAL HOME
 2906 GRAVOIS 772-3000
 10151 GRAVOIS 842-4458
 5255 LEMAY FERRY 894-4500

Proud Parishioners & Supporters of SRA for 20+ years
John & Alec Schicker
 314-664-4100
SchickerAutomotive.com
 Ford Jeep RAM

KITTNER REAL ESTATE GROUP
 angelakittner.com | 314-775-2745