



SAINT RAPHAEL THE ARCHANGEL

CATHOLIC CHURCH

MARCH 9, 2025 FIRST SUNDAY OF LENT



WELCOME!


VISIT OR CONTACT US


6047 Bishops Place
Saint Louis, MO 63109

314.352.8100
straphaelarchangel.org

Mon.-Thu. | 7:30am-4:00pm
Fri. | 7:30am-12:00pm

 @SRAtoday

 @SRAtoday

 straphaelarchangel

SCHOOL INFORMATION

6000 Jamieson Avenue
Saint Louis, MO 63109

314.352.9474 | 314.351.7477 (Fax)

Mon.-Fri. | 7:00am-3:00pm

MASS SCHEDULE

WEEKEND MASS

Saturday | 7:00am, 4:30pm
Sunday | 9:00am

WEEKDAY MASS

Mon. - Fri. | 8:00am

CONFESSION

Monday - Friday | 7:30am
Saturday | 3:30pm
Other | By Appointment

CHURCH OPEN FOR PRIVATE PRAYER

Mon.-Fri. | 8:00am-2:00pm
Saturday | 8:00am-4:30pm

PARISH CLERGY

Fr. Thomas Molini, Pastor
thomasmolini@archstl.org

Fr. Robert Lawson, Associate Pastor
robertlawson@archstl.org

LAY LEADERSHIP

Brian Klos, Pastoral Council
bcklos@gmail.com

Liz Murphey, School Board
schoolboard@straphaelarchangel.org

Joseph Cyr, Finance Council
314.335.7322

Jacqueline Ilg, HSA President
hsa@straphaelarchangel.org

PARISH STAFF

Ray and Mary Anne Braun, Music
Ministers
Braun@straphaelarchangel.org

Diane Halbert, Parish Office
Manager
halbert@straphaelarchangel.org

Mickey Janos, Admn. Assistant
janos@straphaelarchangel.org

Pam Hager, Parish Support Staff/
Child Safety Coordinator
hager@straphaelarchangel.org

Robert Schlueter, Maintenance

Julie Hayes, School Principal
hayes@straphaelarchangel.org

Kathy Shaver, School Secretary
secretary@straphaelarchangel.org

Qi Franz, Cafeteria Manager
franz@straphaelarchangel.org

Sarah Henderson, Youth Minister
hendersons@stgabrielstl.org

MARCH 9, 2025 FIRST SUNDAY OF LENT

First Sunday of Lent: Now we are in it.

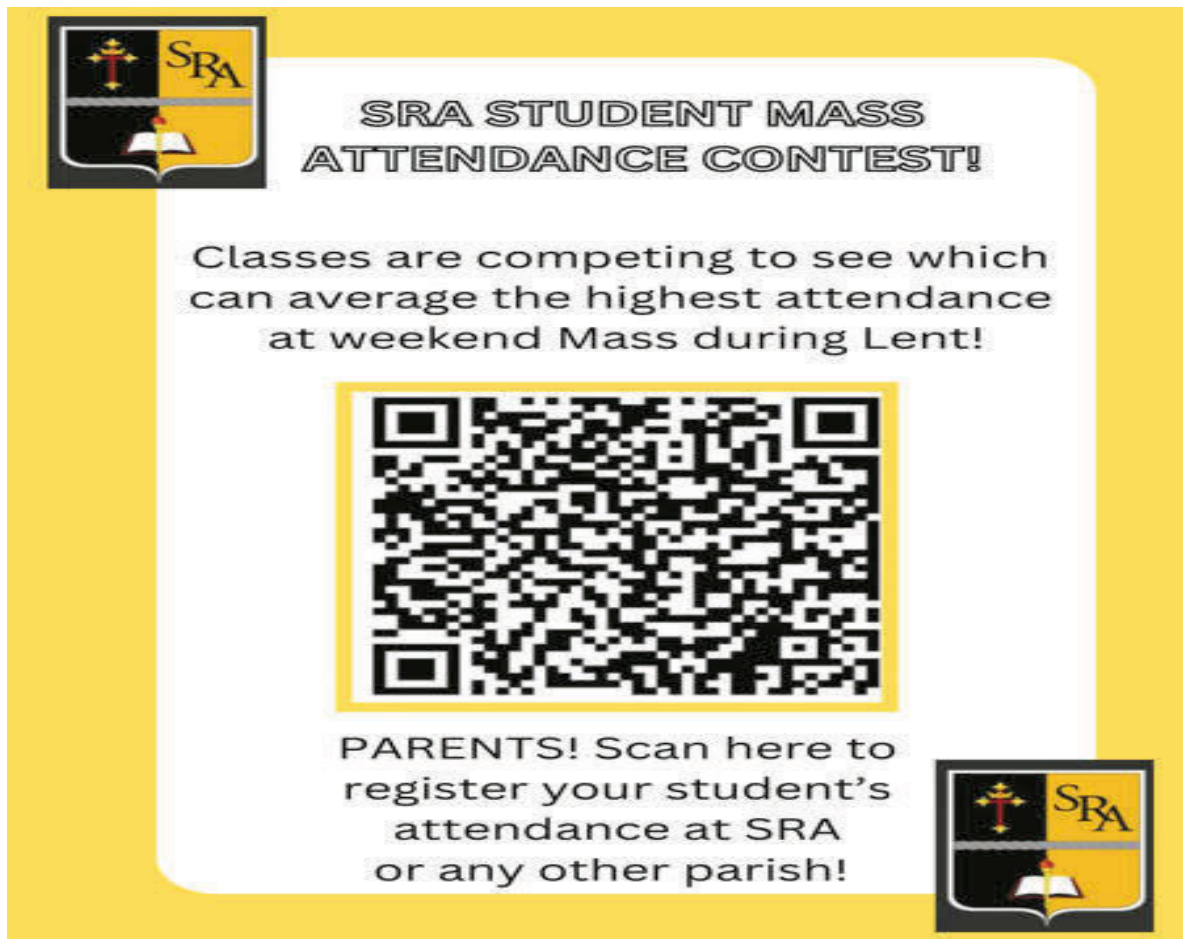
After the initial days of Lent following Ash Wednesday, we enter the first full week of the season. This Sunday's Gospel helps frame this period of reflection as we walk with Jesus in the desert of his temptations. From the start, the Gospel writer gives us the key to facing temptation, when he writes, "Filled with the Holy Spirit..." We do not travel this time of Lent alone. This season is offered to us as a community of faith, the entire Body of Christ, as a time of reflection, prayer, penance, and generosity. We are not alone. The Spirit of God is with us and calls us from one day to the next, inviting us to trust in God's mercy, presence, and love. Even as we are confronted by temptation or frustration, anxiety or loneliness, God remains by our side to guide our path and raise the level of our concentration to the call of discipleship. The Lord's own time in the desert is presented as a reminder that Jesus has gone before us and sets the pattern for our journey: Reliance on God, Trust in His Word, and Hope that does not disappoint.

May we use this first week of Lent to renew our confidence in the Father who calls us in love. May we deepen our reliance on Jesus who is our path to salvation and cast aside the temptations distracting us from holiness. As St. Paul reminds us in the *Letter to the Romans*, "The word is near you, in your mouth and in your heart....No one who believes in him will be put to shame."

Archangel Youth Ministry

The shared youth ministry program for St. Raphael and St. Gabriel has begun operating out of the rectory lower level at St. Raphael. Using St. Raphael for the Luke 18 retreat allows for easier access for preparations and we hope it will foster greater inter-parish participation in the youth ministry program.

(The larger lower level meeting rooms are still available for parish meetings and activities.)



The poster features a yellow background with a white central text box. In the top left and bottom right corners of the white box are the SRA logos, which consist of a shield divided into four quadrants: top-left (cross), top-right (SRA), bottom-left (open book), and bottom-right (candle). The text in the white box reads: "SRA STUDENT MASS ATTENDANCE CONTEST!" followed by "Classes are competing to see which can average the highest attendance at weekend Mass during Lent!". Below this is a large QR code. At the bottom of the white box, it says "PARENTS! Scan here to register your student's attendance at SRA or any other parish!".



Sunday, March 9
9:00am Edythe Crawford

Monday, March 10
8:00am Liddy Family

Tuesday, March 11
8:00am Kris Schneidewind

Wednesday, March 12
8:00am Kris Schneidewind

Thursday, March 13
8:00am Ruthann Alberti

Friday, March 14
8:00am Christopher Ellison

Saturday, March 15
7:00am Christopher Ellison
4:30pm Daniel Liddy

Sunday, March 16
9:00am Ernest J. Winkelmann


"I have now brought you the first fruits of the products of the soil which you, O Lord, have given me." Deuteronomy 26:10

This line from the Old Testament offers two challenges. First, do you give to God from your "first fruits" - the first and best that you have to offer? Or do you give from what you have left over? Second, do you realize that everything you have and everything you are have been given to you by God? You aren't owners of anything; you are merely stewards of God's gifts. Pray for a grateful and generous heart, every day, in all circumstances.

Your Contributions to God and Parish

March 2, 2025 (Envelopes Used)	This Week	Year-to-Date
Regular Env. (23)	\$ 3,904	\$ 144,931
Loose Money	\$ 1,552	\$ 75,718
School Support	\$ 30	\$ 6,813
Building Fund	\$ 320	\$ 6,300
Holy Days	\$ 10	\$ 9,136
Online Giving (52)	\$ 3,078	\$ 104,368
Lenten Project	(\$ 292)	
First Offering	\$ 10	
Lifeline Coalition	(\$ 20)	
Eastern Europe	(\$ 10)	
Grand Total	\$ 9,226	
Total for Parish	\$ 8,904	\$ 353,562
Amount Needed	\$ 10,000	\$ 360,000
Difference	<u>(\$ 1,096)</u>	<u>(\$ 6,438)</u>
FYE 2024		<u>(\$ 17,741)</u>

St. Vincent de Paul



During the last quarter we were able to lessen the burden for 33 families within our parish boundaries. Hopefully, this assistance gave them confidence to look forward to the future on a brighter note. We pray that they experienced the real presence of Jesus Christ in their lives. We used your generous donations of \$34,054 in the following ways: Housing \$6,532, Utilities \$6,734, Clothing \$500, Food \$1,341, and Furniture \$500. We could not do any of this without your continued prayers and financial support. We extend a sincere thank you.

This weekend's Sacred Scripture readings:

Sunday, March 9:
Ritual Song: No. 1118
Pray Together: Page 100



ALTAR SERVERS

SERVERS FOR MARCH 10 - 16, 2025

Monday, March 10

8:00am	Maizy Magee	Kate Ilg
	Vivien Smith	

Tuesday, March 11

8:00am	Eleanor Chitwood	Isa Hogrebe
	Lucca LoBello	

Wednesday, March 12

8:00am	Hannah Kratky	Isaac Potts
	Olivia Wegman	

Thursday, March 13

8:00am	Henry Dirnbeck	Elliot Ottenad
	Mollie Dirnbeck	

Friday, March 14

8:00am	Elle Anstey	Jake Anstey
	Magdalena Niemira	

Saturday, March 15

4:30pm	Mark Boeckmann	Clara Thompson
	Genevieve Montoya	

Sunday, March 16

9:00am	Isa Hogrebe	Corinne Pendry
	Lucca LoBello	

LECTORS/MINISTERS FOR THE WEEKEND OF MARCH 15 - 16, 2025

LECTORS

4:30pm	9:00am
George Kerry	Gerald Unger

Extraordinary Ministers

Pam Hager	Barbara Cramer
Brian McCarthy	Rosita Koehler
Mary Steck	John Rooney
Craig Thompson	Marilyn Unger

UPCOMING EVENTS

Monday, March 10

8:00am	Church	Mass
5:00pm	Cafeteria	Wolf Cub Scouts
6:00pm	Cafeteria	3rd Gr. Girl Scouts
6:30pm	Parish Off.	Pastoral Council
6:30pm	Raphael Rm.	St. Vincent de Paul

Tuesday, March 11

8:00am	Church	Mass
4:30pm	Cafeteria	2nd Gr. Girl Scouts
6:30pm	St. Gabriel	Talks on the Creed
6:30pm	School	HSA

Wednesday, March 12

7:30am	Church	Rosary
8:00am	Church	Mass
5:00pm	Cafeteria	Girl Scouts
8:30pm	Gym	Old Man Basketball

Thursday, March 13

8:00am	Church	Mass
2:00pm	Cafeteria	Dance Class
3:15pm	Cafeteria	4th Gr. Girl Scouts

Friday, March 14

7:30am	Church	Rosary
8:00am	Church	Mass
4:00pm	Cafeteria	Fish Fry (Time TBD)

Saturday, March 15

7:00am	Church	Mass
8:00am	Church	Music Ministry Rehearsal
4:30pm	Church	Mass

Sunday, March 16

9:00am	Church	Mass
--------	--------	------

DAILY READINGS

Sunday	Dt 26:4-10/Ps 91:1-2, 10-11, 12-13, 14-15 (see 5b)/Rom 10:8-13/Lk 4:1-13
Monday	Lv 19:1-2, 11-18/Ps 19:8, 9, 10, 15/Mt 25:31-46
Tuesday	Is 55:10-11/Ps 34:4-5, 6-7, 16-17, 18-19/Mt 6:7-15
Wednesday	Jon 3:1-10/Ps 51:3-4, 12-13, 18-19/Lk 11:29-32
Thursday	Est C:12, 14-16, 23-25/Ps 138:1-2ab, 2cde-3, 7c-8/Mt 7:7-12
Friday	Ez 18:21-28/Ps 130:1-2, 3-4, 5-7a, 7bc-8/Mt 5:20-26
Saturday	Dt 26:16-19/Ps 119:1-2, 4-5, 7-8/Mt 5:43-48
Next Sunday	Gn 15:5-12, 17-18/Ps 27:1, 7-8, 8-9, 13-14/Phil 3:17-4:1 or 3:20-4:1/Lk 9:28b-36



Girl Scout Sunday

SRA will celebrate Girl Scout Sunday today, Sunday, March 9, at the 9:00am Mass.



Donut Sunday

Today is Donut Sunday! Please join your fellow parishioners for a donut after the 9:00am Mass. If you attend 4:30pm Mass, please return on Sunday for a donut and fellowship. We look forward to seeing you! This Donut Sunday is hosted by the Girl Scouts.

We would like to welcome the following new member to our church. We hope you know that we are here for you. There are several committees and clubs that you might like to join where you can meet other parishioners. As a faith community, we like to help others in our area and those less fortunate than we are. Please join us at Mass and we hope you will consider joining us in future church activities. Again, welcome to St. Raphael the Archangel Parish; we are happy to have you join us.

Meghan Miller

SAVE THE DATE

SRA

GARDEN

GARDEN

GARLOTS

SRA DAY OF SERVICE

SATURDAY, APRIL 26

MOST HOLY TRINITY | ST. RAPHAEL | IMMIGRANT AND REFUGEE MINISTRY

MORE DETAILS TO COME.

Please Join Us on March 29, 2025 for The Annual SRA

Progressive Dinner Party



A night of Food, Fun, & Fellowship for \$30 per person

(fees waived for host houses)

How Does a Progressive Dinner Work?

You will be contacted in the week before with a house to go to for Appetizers.

After Appetizers your host will inform you where to go for Dinner.

Dessert and Fun to follow at The Braun's.

Questions?

Contact Ellen Pendry at ellenpendry@gmail.com or (314) 229-9243

Reservations Required

Detach and return the below form by March 24, 2025

I Can't Wait for the Progressive Dinner Party

RSVP and Payment can be dropped off at the Rectory or School Office in care of Ellen Pendry
Make checks payable to SRA Ladies' Club

I would like to:

Host an Appetizer _____ Host a Dinner _____ Drop off a Dessert _____

Number of Attendees _____

Name of Attendees _____

Address _____

Contact Info _____

Host volunteers will be contacted with more information

BIG CHANGES TO ARCHANGEL YOUTH MINISTRY (AYM)!

AYM has moved to St. Raphael the Archangel in the parish office lower level! We are so excited for this opportunity to continue meeting in a new space (as our former space at St. Gabriel will be renovated) and to become more involved with St. Raphael parish!

We are currently preparing for the Luke 18 Retreat so our Life Teen (Sunday) and R&R (Wednesday) nights will be on hold for the months of March and April, but we look forward to welcoming everyone back in May.

LOOKING AHEAD

***March 23** | Teen/Youth 5:30pm Mass at SGA church

***April 16** | AYM leads Silhouette Stations of the Cross at SGA church

***April 25-27** | Luke 18 Retreat! | for 8th graders, led by high school teens

***May 4** | Life Teen Nights Return!

***June 14** | SGA Block Party! (service hour opportunity)

***July 18-20** | AYM at Steubenville 2025!

STAY CONNECTED WITH AYM

Follow us on Instagram @archangelym

Like our Facebook Group: Archangel Youth Ministry

Join the SGA or SRA Flocknote Group: Youth Ministry

Visit the Youth Group page on the SGA parish website

Contact Youth Minister: Sarah Henderson - hendersons@stgabrielstl.org

The Ladies' Club March meeting is later than usual due to Spring Break. It will be held on March 27, at 7:00pm, in the cafeteria. You have an option to paint a Spring or Easter door sign. If you would like to participate, the cost is \$30 and the deadline to reserve is **MARCH 13**. Please see sample pictures. Choice of sign and payment will be required in advance and can be paid through PayPal, add \$1 and using QR code below, or by \$30 cash/check dropped at the parish office. Checks should be made out to SRA Ladies' Club, memo "Spring Painting." Please contact Krissy Sullivan at 314.608.9983 for questions or to sign up by phone.

<https://www.signupgenius.com/go/10C094FABAA2AA6FCC52-55175014-march>



**SAVE THE DATE!
SRA LADIES' CLUB QUARTER AUCTION
APRIL 11, 2025**

Be sure to save the date for the Ladies' Club upcoming Quarter Auction. The Club is soliciting new and unused items. Below are some donation suggestions. Please deliver any items to the parish office, marked "Quarter Auction."

- Gift Certificates
- Event Tickets
- Purses
- Jewelry
- Beauty/Healthcare Projects
- Self-Care Items
- Organization Tools
- Memberships/Passes
- Outdoor Games
- Board Games
- SRA Branded items
- Sport/Exercise Equipment



- Camping Equipment
- Sports Memorabilia
- Wine, Beer, Spirits
- Kitchen Items/Small Appliances
- Water Bottles/Thermal Cups
- Home Goods/Decorations
- Electronics
- Holiday Décor/Items
- Glassware/Barware
- Candles
- Non-perishable Food Baskets
- Lottery Scratch-off Tickets



If you have not picked up a Catholic Relief Services (CRS) Rice Bowl, you will find one at the entrances to church. This is a special way for your family to unite in sharing with our sisters and brothers in need.



SRA Lenten Projects...

Our Lady's Inn and Prison Ministries

Generosity
changes everything

This year, our SRA Lenten projects will benefit two charities: Our Lady's Inn Maternity Home in Defiance, MO, and prison ministries in both the Pacific Correctional Center and the Residents Encounter Christ retreat program.

- Our Lady's Inn Maternity Home helps those moms who may have been homeless or experienced housing insecurity and are making life-affirming decisions for their child. Our Lenten project will help these women and their children by providing laundry baskets and goodie bags with much needed necessities. Items requested by Our Lady's Inn are:

Shower gel or body wash	Hairbrushes/combs
Household supplies/paper products	Boxes of cake and brownie mix
Baby shampoo/lotion/baby wash	Kitchen and hand towels
Adult coloring books or journals and colored pencils	Individual snacks for lunches
Gift cards to Walmart or fast food places	Laundry detergent



There are baby gift bags in Church, one under the Blessed Mother statue and one under the St. Joseph statue; please put any of these donated items in the bags now through Sunday, April 6, 9:00am Mass.

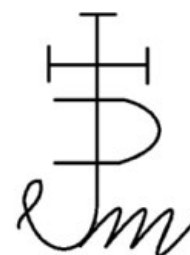


- Through our financial support given to the Pacific Correctional Center and the Residents Encounter Christ retreat program, the incarcerated will personally encounter Jesus Christ through our Corporal Works of Mercy. Participants experience the message of Christ through participation in a simple and modest meal, discussions, talks, prayer, scripture, and liturgy. Financial donations help those who are conducting retreat programs and administering the Sacraments to those incarcerated. This portion of the Lenten project is financial in nature only; envelopes are included in the pews for cash or checks and can be put in the collection basket or taken to the SRA parish office at any time. If you prefer online giving, look for "Lenten Project" as a donation option.

Please support this year's Lenten projects, as you have so graciously done in years past; your generosity does make a huge difference in so many lives. If you have any questions, please contact the parish office at 314.352.8100. Thank you.

Jonah Prayer Team Ministry

We are happy to announce a new ministry at St. Raphael the Archangel Parish. The Jonah Prayer Team consists of a group of fellow SRA Parishioners trained through the archdiocese to provide personal, intercessory prayer for various situations. All are welcome to reach out to members of the team for special intentions, troubles, and prayers. They will regularly be available the second weekend of each month, starting in March. Members will be located in church after both Masses that weekend on the cry room side.



Congratulations to all the students who participated in the local History Day competition in February. Susan I. wrote a paper that placed third, and Clara T., Helen P., and Addi P. came in first place with their exhibit. All four girls will advance to the state competition in April. Thanks to Ava C., Paddy M., Jake A., and James B. for submitting papers to the local contest. Thanks also to Daniella G., Mae K., Lucy M., and Andrea M. for their exhibit. Everyone worked diligently on the entries and did well answering the judges' questions. Good luck to those going on to the state competition.

ST. RAPHAEL THE ARCHANGEL

Statement of Revenue & Expense

For the Fiscal Year July 1, 2023 through June 30, 2024

	Parish	School	Pre-School	Summer Camp	Parish Organizations	Total	FY25 Budget
Revenue							
Offertory Collections	\$ 540,869	\$ -	\$ -	\$ -	\$ -	\$ 540,869	\$ 518,678
Unrestricted Gifts	\$ 100,299	\$ -	\$ -	\$ -	\$ -	\$ 100,299	\$ 80,210
Restricted Gifts	\$ 13,099	\$ 123,192	\$ -	\$ -	\$ (19,457)	\$ 116,835	\$ 167,480
Program Fees	\$ 4,615	\$ 887,520	\$ 197,272	\$ 64,633	\$ 45,795	\$ 1,199,836	\$ 1,230,868
Investment Income	\$ 32,826	\$ -	\$ -	\$ -	\$ 67	\$ 32,892	\$ 36,730
Grant Revenue	\$ 1,485	\$ 121,286	\$ -	\$ -	\$ -	\$ 122,771	\$ 105,500
Fundraisers & Other Revenue	\$ 133,657	\$ 17,092	\$ -	\$ -	\$ 76,933	\$ 227,682	\$ 131,750
Merchant Account Fees	\$ (7,720)	\$ (151)	\$ -	\$ -	\$ (78)	\$ (7,948)	\$ (5,360)
Total Revenue	\$ 819,130	\$ 1,148,939	\$ 197,272	\$ 64,633	\$ 103,261	\$ 2,333,235	\$ 2,265,856
Expense							
Personnel Costs	\$ (138,551)	\$ (1,006,336)	\$ (177,815)	\$ (56,155)	\$ -	(\$1,378,858)	(1,470,712)
Supplies	\$ (44,953)	\$ (112,461)	\$ (561)	\$ (3,804)	\$ (69,580)	(\$231,359)	(174,360)
Fees & Services	\$ (28,766)	\$ (51,773)	\$ (1,380)	\$ (1,864)	\$ (19,192)	(\$102,975)	(75,250)
Occupancy	\$ (30,464)	\$ (76,899)	\$ -	\$ -	\$ -	(\$107,363)	(106,810)
Utilities	\$ (43,074)	\$ (50,110)	\$ -	\$ -	\$ -	(\$93,183)	(105,654)
Repairs & Maintenance	\$ (13,076)	\$ (10,239)	\$ -	\$ -	\$ (451)	(\$23,766)	(58,100)
Catholic Education Support	\$ (50,635)	\$ (53,154)	\$ -	\$ -	\$ -	(\$103,789)	(105,273)
Insurance	\$ (35,045)	\$ (29,345)	\$ -	\$ -	\$ -	(\$64,390)	(76,165)
Arch Assessments	\$ (58,926)	\$ (33,817)	\$ -	\$ -	\$ -	(\$92,743)	(91,175)
Total Expense	(\$443,489)	(\$1,424,135)	(\$179,756)	(\$61,823)	(\$89,223)	(\$2,198,426)	(\$2,263,499)
Excess (Deficiency) of Operating Revenue Over Expense							
	\$375,641	(\$275,196)	\$17,516	\$2,810	\$14,038	\$134,809	\$2,357
Endowment Income	\$1,810	\$0	\$0	\$0	\$0	\$1,810	\$0
Capital Expenditures	\$0	(\$54,356)	\$0	\$0	\$0	(\$54,356)	(\$10,000)
Other Non-Cash Transactions	\$135	(\$9,398)	\$0	(\$1,108)	(\$4)	(\$10,376)	(\$1,000)
Excess (Deficiency) of Total Revenue Over Expense	\$377,585	(\$338,951)	\$17,516	\$1,702	\$14,034	\$71,886	(\$8,643)
						<i>Net Assets at Beginning of Year</i>	\$1,264,446
						<i>Net Assets at End of Year</i>	\$1,336,333

NOTES:

Very few capital expenditures were unusual, but the Finance Committee is preparing a list of projects to better prioritize our needs.

These figures represent the last fiscal year and the current budget.

ST. RAPHAEL THE ARCHANGEL

Statement of Financial Position

For the Annual Fiscal Period ending June 30, 2024

	June 30, 2024	June 30, 2023	\$ Change	% Change
ASSETS				
Current Assets				
Cash				
General Checking	\$ 79,751	\$ 208,294	\$ (128,544)	-61.7%
Restricted Cash	\$ 11,395	\$ 12,423	\$ (1,029)	-8.3%
Orgaztion Cheeking	\$ 294,779	\$ 190,670		
Petty Cash	\$ 100	\$ 200	\$ (100)	-50.0%
Total Cash	\$ 386,025	\$ 411,587	\$ (25,562)	-6.2%
Accounts Receivable	\$ 32,269	\$ 3,680	\$ 28,589	776.9%
Other Current Assets				
SLAF / Parish Savings	\$ 1,003,150	\$ 919,041	\$ 84,109	9.2%
Restricted / Endowment Fund	\$ 16,945	\$ 15,297	\$ 1,648	10.8%
Pre Paid Expenses	\$ 12,644	\$ 16,172	\$ (3,528)	-21.8%
Other Assets	\$ -	\$ -	\$ -	0.0%
Total Other Current Assets	\$ 1,032,739	\$ 950,511	\$ 82,228	8.7%
Total Current Assets	\$ 1,451,033	\$ 1,365,778	\$ 85,255	6.2%
TOTAL ASSETS	\$ 1,451,033	\$ 1,365,778	\$ 85,255	6.2%
LIABILITIES & EQUITY				
Current Liabilities				
Accounts Payable	\$ 40,550	\$ 25,375	\$ 15,176	59.8%
Credit Cards	\$ 1,059	\$ 228	\$ 832	365.1%
Special Collections Payable	\$ -	\$ -	\$ -	0.0%
Deferred Revenue	\$ 39,077	\$ 41,497	\$ (2,420)	-5.8%
Prepaid Tuition & Fees	\$ 33,841	\$ 35,496	\$ (1,656)	-4.7%
Other Liabilities	\$ 173	\$ 204	\$ (32)	-15.5%
Notes Payable	\$ -	\$ -	\$ -	0.0%
Total Liabilities	\$ 114,700	\$ 102,800	\$ 11,900	11.6%
Equity				
Fund Balance	\$ 1,264,446	\$ 1,438,164	\$ (173,718)	-12.1%
Net Income	\$ 71,886	\$ (173,718)	\$ 245,604	141.4%
Total Equity	\$ 1,336,333	\$ 1,264,446	\$ 71,886	5.7%
TOTAL LIABILITIES & EQUITY	\$ 1,451,033	\$ 1,367,246	\$ 83,786	6.1%

NOTES:

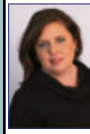
SLAF is the St. Louis Archdiocesan Fund, the account holding our savings. These savings are used only for St. Raphael and are interest-bearing accounts.

Parish Savings include monies from the past parish fund drive (about \$300,000) and are for church improvements: windows, paint, flooring, etc.



(314) 481-7333
Since 1927

Bartolino's
Hospitality Group
Bartolino's Bartolino's Bartolino's
Chris Chris
Cook good food & give plenty.
bartolinosrestaurants.com



Jennifer Lueken Delf
Sales Associate
314-323-6073 Cell
314-965-3030 Office
314-965-2858 Fax
jennifer.delf@cbgundaker.com
421 South Kirkwood Road
Kirkwood, MO 63122
jenniferdelf.cbintouch.com
Operated by a subsidiary of NRT LLC.



IMO'S PIZZA
832-9677
5806 Hampton Avenue
CARRY OUTS & DELIVERY

WE'RE HIRING!
AD SALES EXECUTIVES

BE YOURSELF.
BRING YOUR PASSION.
WORK WITH PURPOSE.

- Paid training
- Some travel
- Work-life balance
- Full-Time with benefits
- Serve your community



Contact us at
careers@4lpi.com or
www.4lpi.com/careers



Karen Majda
REALTOR® GRI
(314) 574-2560
(314) 353-8888
Wood Brothers Realty
6500 Chippewa St. Fl 1
Saint Louis, MO 63109

metroStorage express
Climate Control & Drive Up Units Available
No Fees. Gated Facility 24/7 Access
Seniors & Military 10% off
Second Month Free. Closed Circuit Security
metrostoragemo.com
2729 HEREFORD ST. • 314-312-2020
LOCATED ON THE HILL OFF ARSENAL

Paul Karasek Since 1954
BRUNETTI / PESC-CO., INC.
Professional Exterminating Service & Chemical CO.
200 S. Elam
Valley Park, MO 63088
314-487-2208 1-888-220-BUGS

- FIELDER - ELECTRICAL SERVICES, INC.
LICENSED • BONDED • INSURED RESIDENTIAL • COMMERCIAL • INDUSTRIAL
Service Upgrades • New Homes • Remodeling • Room Additions • Basements • Kitchens
Bathrooms • Code Violations • Knob & Tube Upgrades • Back Up Generator Systems
\$20 OFF Any Electrical Work of \$100 or more **314-966-3388**

SUPPORT OUR ADVERTISERS!

SUPPORT OUR ADVERTISERS!



Enjoying life is what it's all about at
Tower Grove Manor
We have garage parking, plus lovely apartments with walk-in closets, full kitchens, and great views of Tower Grove Park and the skyline. More amenities, activities and only minutes from theatres, the Botanical Garden, and the best healthcare.
2710 S. Grand Blvd.
St. Louis, MO 63318
Tel. 314-773-2800
www.towergrovemanager.org

DAVEY
TREE & LAWN CARE EXPERTS SINCE 1880
\$20 OFF
Tree Pruning/Removal/Fertilization
(314) 961-5440 | www.davey.com

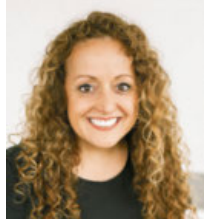
DOES YOUR NONPROFIT ORGANIZATION NEED A NEWSLETTER?

Engaging, ad-supported print and digital newsletters to reach your community.
Visit lpicommunities.com

OUR COMMUNITY NEWSLETTER
OCTOBER EDITION
Scan to contact us!

ROSATI-KAIN ACADEMY
Catholic. All-Girls. College-Prep.
APPLY NOW
Educating women to lead and serve the world!
www.rosati-kain.org / 4389 Lindell Blvd, St. Louis, MO 63108

ANNA GARCIA
garcia PROPERTIES
cell 314.973.3319 • www.garciasll.com
anna@garciaproperties.com



EPIC PIZZA
314.436.3742
Sun - Thurs: 11am - 10:30pm
Fri - Sat: 11am - 1:30am
1711 South 9th Street

Bieg PLUMBING COMPANY
Commercial & Residential
(314) 487-4564

GRAVOIS GLASS
Residential & Commercial
GLASS REPLACEMENT
Most Insulated Units in 24 Hours
Mirrors • Table Tops
Insulated Glass • Window Parts • Safety Glass
314-352-2200 | gravoisglass@aol.com
6825 Gravois Ave. St. Louis 63116

Scott R. Holdridge, Agent
Call or Email me Today!
Bus: 314-664-5433
 scott@scottholdridge.com
 scottholdridge.net

I can help you with your Insurance, Banking and Financial Services Needs



HOFFMEISTER COLONIAL MORTUARY
Helping people is our business.

Conveniently located at
 6464 Chippewa in St. Louis Hills



www.hoffmeistercolonial.com • 314.832.7770



Judy McNamara
 3304 Watson Road
 St Louis, MO 63139
 314-781-2290

www.judymcnamara.com

Place Your Ad Here and Support our Parish!

Instantly create and purchase an ad with

AD CREATOR STUDIO



4lpi.com/adcreator



New Construction, Additions, & Garages

STL BUILD CO. 314-329-4955

build@stlbuildco.com • www.stlbuildco.com

SOUTH SIDE HARDWARE
Family Owned & Operated Since 1925

Good Neighbors, Good Advice

Steve, Brian, Sean, Gary, & Allison
 6401 Hampton Avenue, St. Louis, MO 63109
southsidetruevaluehardware@gmail.com

SouthsideHardware.com 314-351-0204



Specializing In Older Home Repairs

314-752-1101

St. Louis, MO

SARACINO
Dr. Catherine Saracino
 DMD, MSD, MS
ORTHODONTIST
 Braces • Invisalign • Whitening
 314.649.8999 | Saracinoorthodontics.com
 6555 Chippewa St., Suite 200
 St. Louis, MO 63109

CATHOLIC SUPPLY
 OF ST. LOUIS, INC.
ST. LOUIS HILLS | (314) 644-0643
 6759 Chippewa | St. Louis, MO 63109
 Mon-Sat 9:00am to 5:30pm
ST. CHARLES COUNTY | (636) 379-3705
 2985 Hwy K | O'Fallon, MO 63368
 Mon-Sat 10:00am to 5:30pm
catholicsupply.com

FREE AD DESIGN
 with purchase of this space
CALL 800-950-9952

DOES YOUR NONPROFIT ORGANIZATION NEED A NEWSLETTER?

Engaging, ad-supported print and digital newsletters to reach your community.

OUR COMMUNITY NEWSLET
 OCTOBER EDITION

Scan to contact us!

[Visit lpicommunities.com](http://Visitlpicommunities.com)

JAMES LEGRAND

4414 Donovan
 314-353-6128
legrandsmarket-catering.com
LeGrands Market & Catering

Loyalty LAWN CARE
 A Green Group® Company.

**Fertilization
 Weed Control
 Aeration
 Seeding**

loyaltylawnare.com (636) 306-3671

IF YOU LIVE ALONE

MDMedAlert!™ As Low As **\$19⁹⁵** /mo.

- ✓ Ambulance ✓ Police/Fire
- ✓ Family/Friends ✓ GPS & Fall Alert

CALL NOW! 800.808.9294
md-medalert.com

Celebrate life with faith and friends at The Sarah Community!

THE SARAH COMMUNITY

12284 DePaul Drive
 Bridgeton, MO 63044
 314-209-7000

TheSarahCommunity.com | [TheSarahCommunity](https://www.facebook.com/TheSarahCommunity)

LET'S GROW YOUR BUSINESS
 Place Your Ad Here and Support Our Parish!

**CONTACT ME
 Iris Mitchell**

imitchell@4LPi.com
 (800) 950-9952 x2495

Kutis FUNERAL HOME

2906 GRAVOIS
 772-3000

10151 GRAVOIS
 842-4458

5255 LEMAY FERRY
 894-4500

Proud Parishioners & Supporters of SRA for 20+ years

John & Alec Schicker
 314-664-4100
SchickerAutomotive.com

KITTNER REAL ESTATE GROUP

angelakittner.com | 314-775-2745