



SAINT RAPHAEL THE ARCHANGEL

CATHOLIC CHURCH

NOVEMBER 24, 2024 JESUS CHRIST, KING OF THE UNIVERSE



OUR LORD JESUS CHRIST, KING OF THE UNIVERSE

So Pilate said to him, "Then you are a king?" Jesus answered, "You say I am a king. For this I was born and for this I came into the world, to testify to the truth. Everyone who belongs to the truth listens to my voice." - Jn 18:37

WELCOME!

VISIT OR CONTACT US

6047 Bishops Place
Saint Louis, MO 63109

314.352.8100
straphaelarchangel.org

Mon.-Thu. | 7:30am-4:00pm
Fri. | 7:30am-12:00pm

[f](#) @SRAtoday

[t](#) @SRAtoday

[i](#) straphaelarchangel

SCHOOL INFORMATION

6000 Jamieson Avenue
Saint Louis, MO 63109

314.352.9474 | 314.351.7477 (Fax)

Mon.-Fri. | 7:00am-3:00pm

MASS SCHEDULE

WEEKEND MASS

Saturday | 7:00am, 4:30pm
Sunday | 9:00am

WEEKDAY MASS

Mon. - Fri. | 8:00am

CONFESSION

Monday - Friday | 7:30am
Saturday | 3:30pm
Other | By Appointment

CHURCH OPEN FOR PRIVATE PRAYER

Mon.-Fri. | 8:00am-2:00pm
Saturday | 8:00am-4:30pm

PARISH CLERGY

Fr. Thomas Molini, Pastor
thomasmolini@archstl.org

Fr. Robert Lawson, Associate Pastor
robertlawson@archstl.org

LAY LEADERSHIP

Brian McCarthy, Pastoral Council
brianmccarthy@peaknet.net

Liz Murphey, School Board
schoolboard@straphaelarchangel.org

Joseph Cyr, Finance Council
314.335.7322

Jacqueline Ilg, HSA President
hsa@straphaelarchangel.org

PARISH STAFF

Ray and Mary Anne Braun, Music Ministers
Braun@straphaelarchangel.org

Diane Halbert, Parish Office Manager
halbert@straphaelarchangel.org

Mickey Janos, Admn. Assistant
janos@straphaelarchangel.org

Pam Hager, Parish Support Staff/
Child Safety Coordinator
hager@straphaelarchangel.org

Robert Schlueter, Maintenance

Julie Hayes, School Principal
hayes@straphaelarchangel.org

Kathy Shaver, School Secretary
secretary@straphaelarchangel.org

Qi Franz, Cafeteria Manager
franz@straphaelarchangel.org

Sarah Henderson, Youth Minister
hendersons@stgabrielstl.org

NOVEMBER 24, 2024 JESUS CHRIST, KING OF THE UNIVERSE

Fr. Molini's Notes

Give Thanks to the Lord

Thanksgiving is just days away. Plan now on starting the day by offering thanks to the benefactor of all we have, the Lord God. Mass will be celebrated at St. Raphael at 8:00am on Thanksgiving morning. All are invited to begin the day by offering thanks to God.

Advent Approaches

Beginning on December 1, the season of Advent opens the new liturgical year and directs our attention to the preparations for Christmas. While so many of us will make special efforts to decorate our homes for Christmas, how are we preparing our souls for the celebration of Christ's birth? The second graders remind us of a wonderful way to prepare as they make their way to their First Reconciliation during Advent. What a beautiful reminder they offer as they approach the confessional for the first time and come to know the comfort of the forgiveness of sins. Their effort is our challenge: make a good confession this Advent season. Confessions are heard each weekday morning from 7:30am until all are heard and on Saturdays at 3:30pm. Parents, as you drop off your children for school, how about stopping in church for confession? Families, after a game on Saturday afternoon, come by the church to make a confession, supporting each other in prayer. Let's use Advent as it is intended – to prepare for the coming of Christ.

Early Bulletin Deadlines

Due to the upcoming holy days and holidays, the bulletin publisher will have earlier publishing deadlines. Therefore, if you have anything for our bulletin, please send any items to the office as early as possible before your event.

Thanksgiving Office Hours

The parish office will be closed on Thursday and Friday, November 28 and 29, for the Thanksgiving holiday.

Our Parish Mission Statement

We, the parish of Saint Raphael the Archangel, celebrate Jesus as the center of our life. Through our active participation in the Eucharist, we strive to recognize Jesus in our daily lives and the lives of others. Our commitment is to grow as a parish family, and live this through our religious, educational, social, and civic involvements, witnessing to all, our faith in God the Father, Son, and Holy Spirit.

A Prayer Before Holy Mass

Heavenly Father: I, your unworthy servant, come to worship You in this Holy Sacrifice of the Mass. By Your grace, kindly help me to listen attentively, pray devoutly, and receive worthily the Sacred Body and Blood of Your Son, our Lord Jesus Christ. May Your Holy Spirit open the eyes of my heart to perceive more fully the great Mystery that takes place on the sacred altar. At this Holy Mass, I wish to pray in particular for the following intentions: *(here name them)*. Amen.



Sunday, November 24
9:00am Dolores Stadler

Monday, November 25
8:00am Kris Schneidewind

Tuesday, November 26
8:00am Liddy Family

Wednesday, November 27
8:00am Family of Neil and Judy Svetanics

Thursday, November 28
8:00am Dan Harbaugh

Friday, November 29
8:00am Carol Bernaal Will

Saturday, November 30
7:00am Kris Schneidewind
4:30pm Jim Gosrau

Sunday, December 1
9:00am Raymond Braun

"Jesus answered, 'My kingdom does not belong to this world.'" JOHN 18:36

Life is short. How much time, energy, and money do you put into building "your" kingdom here on earth? You know you can't take it with you. The real kingdom is in the next life. Yet, how much time, energy, and money do you invest in working for that eternal kingdom? Ask God for His guidance. Detach from earthly possessions. Generously share your material goods with others for the greater glory of God.

Your Contributions to God and Parish

Nov. 17, 2024	This Week	Year-to-Date
(Envelopes Used)		
Regular Env. (61)	\$ 3,625	\$ 86,014
Loose Money	\$ 1,365	\$ 36,214
School Support	\$ 15	\$ 3,325
Building Fund	\$ 40	\$ 3,250
Holy Days	\$ 10	\$ 1,861
Online Giving (49)	\$ 3,206	\$ 57,867
Human Dvpt.	(\$ 395)	
Retired Religious	(\$ 40)	
Grand Total	\$ 8,696	
Total for Parish	\$ 8,261	\$ 190,447
Amount Needed	\$ 10,000	\$ 200,000
Difference	<u>\$ 1,739</u>	<u>(\$ 9,553)</u>
FYE 2024		<u>(\$ 17,741)</u>

St. Vincent de Paul

We have no way of knowing what we will encounter when we enter the homes of our neighbors who have reached out to us for help. They are human beings, just like us, with unique backgrounds and different needs. Some of them have lost their jobs due to illness, and some of them have had to give up their jobs to care for a loved one who is ill. There are numerous reasons why they come to us in their time of suffering and pain. We pray to the Holy Spirit to inspire us to treat them as Jesus would treat them. We are all children of God. Thank you for your prayers and generous donations.



This weekend's Sacred Scripture readings:

Sunday, November 24:
Ritual Song: No. 1294
Pray Together: Page 69



ALTAR SERVERS

SERVERS FOR NOV. 25 - DEC. 1, 2024

Monday, November 25

8:00am	Henry Dirnbeck	Archie Geisz
	Mollie Dirnbeck	

Tuesday, November 26

8:00am	Harrison Baker	Francie Berry
	Mac Teeter	

Wednesday, November 27

8:00am	Lucy Howard	Ava Christlieb
	William Schneeberger	

Thursday, November 28

8:00am	Adriana Kurtovic	Kerry Mense
	Leo Kurtovic	

Friday, November 29

8:00am	Corinne Pendry	Kate Ilg
	Frank Koziacki	

Saturday, November 30

4:30pm	Mark Boeckmann	Isa Hogrebe
	Samantha Zouglas	

Sunday, December 1

9:00am	Joseph Sullivan	Elle Anstey
	Jake Anstey	

LECTORS/MINISTERS THANKSGIVING DAY AND FOR THE WEEKEND OF NOV. 30 - DEC. 1 2024

LECTORS

Thanksgiving Day - 8:00am	Suzy Ferrenbach
---------------------------	-----------------

4:30pm	
Linda Hiette	

9:00am	
Heather Hays	

Extraordinary Ministers

Thanksgiving Day - 8:00am	George Kerry
	Linda Saracino

Pam Hager	
Christy Connor	
Tony Mariani	

Marilyn Unger	
Krissy Sullivan	
John Rooney	



Monday, November 25

8:00am	Church	Mass
6:00pm	Cafeteria	3rd Gr. Girl Scouts
7:00pm	Raph. Rm.	Knights of Columbus

Tuesday, November 26

8:00am	Church	Mass
--------	--------	------

Wednesday, November 27 (School closed)

7:30am	Church	Rosary
8:00am	Church	Mass
7:30pm	Church	So. City Men's Recollection
8:30pm	Gym	Old Man Basketball

Thursday, November 28 - Thanksgiving Day

8:00am	Church	Mass
--------	--------	------

Friday, November 29

7:30am	Church	Rosary
8:00am	Church	Mass

Saturday, November 30

7:00am	Church	Mass
8:00am	church	Music Ministry rehearsal
4:30pm	Church	Mass

Sunday, December 1

9:00am	Church	Mass
10:00am	Cafeteria	Donuts/visit with Santa

DAILY READINGS

Sunday	Dn 7:13-14/Ps 91:1, 1-2, 5 (1a)/Rv 1:5-8/Jn 18:33b-37
Monday	Rv 14:1-3, 4b-5/Ps 24:1bc-2, 3-4ab, 5-6/Lk 21:1-4
Tuesday	Rv 14:14-19/Ps 96:10, 11-12, 13/Lk 21:5-11
Wednesday	Rv 15:1-4/Ps 98:1, 2-3ab, 7-8, 9/Lk 21:12-19
Thursday	Rv 18:1-2, 21-23; 19:1-3, 9a/Ps 100:1b-2, 3, 4, 5/Lk 21:20-28
Friday	Rv 20:1-4, 11—21:2/Ps 84:3, 4, 5-6a and 8a/Lk 21:29-33
Saturday	Rom 10:9-18/Ps 19:8, 9, 10, 11/Mt 4:18-22
Next Sunday	Jer 33:14-16/Ps 25:4-5, 8-9, 10, 14 (1b)/1 Thes 3:12—4:2/Lk 21:25-28, 34-



Donut Sunday

Today is Donut Sunday! Please join your fellow parishioners for a donut after the 9:00am Mass. If you attend 4:30pm Mass, please return on Sunday for a donut and fellowship. We look forward to seeing you! This Donut Sunday is hosted by the Donut Gang.

St. Raphael Advent Angel Giving Tree

Our St. Vincent De Paul Conference will once again sponsor the Advent Angel Giving Tree, benefitting Peter & Paul Community Services. P&P offers various services to those who are unhoused, many of whom are living with mental illness, addiction, or long-term medical conditions. They offer transitional housing, employment opportunities, and other programs to support the goal of living independently.

Our parish will provide gifts for residents of the Supportive Housing program, Garfield Place Apartments. GPA provides clients with a permanent place to stay while also providing supportive services, including a nurse, occupational therapist, and educational classes on topics such as financial literacy and healthy eating. In addition, we will provide gifts to participants in the Positive Directions programs who are living with HIV. Positive Directions helps to provide resources to keep people healthy and housed.



If you are interested in participating, please return your gifts NO LATER THAN SUNDAY, DECEMBER 15, at the 9:00am Mass. DO NOT wrap your gifts- but DO attach the tag to the gift so we can be sure it gets to the correct person.

We are grateful for your continued generosity, allowing us to provide needed support to this organization that is working hard to improve and change lives for the better. Thank you to all who are able to participate in this Advent Season of giving to those in need. The tree will be in church the weekend before Thanksgiving.

New and Expectant Parent Network (N.E.X.T.)

The SRA New and Expectant Parent Network (N.E.X.T.) exists to support parents who are expecting or have recently given birth to or lost a child. The Network is always willing to accept new members and referrals or requests for our support. This includes meal delivery for about four to six weeks, prayers, and any baby supplies needed for the family. We are also in contact with our sister parish, Most Holy Trinity, to offer the same support to members in need at that parish. You may contact N.E.X.T. at nextministry@straphaelarchangel.org. Thank you.

LARGE-PRINT MISSALETTE

The new, large-print edition of the *Pray Together* missalette for December 1, 2024, through April 12, 2025, is now available. If you would like one, please stop by the parish office to pick one up. The office hours are Monday - Thursday from 7:30am until 4:00pm and Friday from 7:30am until noon.

Join us for a festive morning filled with holiday cheer, delicious donuts from Donut Drive-In, and a special visit from Santa Claus himself! All proceeds benefit the SRA 8th Grade Class Mystery Trip!

Date: Sunday, December 1, 2024

Time: After 9:00 am Mass until Noon

Location: SRA School Cafeteria

Tickets: \$25 per family (Adults and Children)

Menu/Activities:

- Donuts, coffee, juice
- Family/kids visit with Santa
- Holiday Crafts
- Picture with Santa

Purchase your tickets in advance via PayPal @ paypal.me/8thgrade2025 at the school office or from any 8th-grade student via check or cash. Please include your family name and how many we should expect. Questions? Contact:



JOIN US!

Every third Thursday in the cafeteria

SERVICE • COMMUNITY • FELLOWSHIP

The SRA Ladies' Club is continually adding new members and looking for ideas to support the school, the parish, and each other. Come as you are, and stay as long, or as little as you would like for a meeting, food, drinks, and friendship. We have multiple events throughout the year, including the Uniform Exchange, Fall Mum Sale, Christmas Wreath Sale, and more.

Our two largest fundraisers are Vendor Fair and Quarter Auction. These events raise money to sponsor funds for teacher appreciation, school needs, parish needs, Girl Scouts, class trips, Prayer Shawl Mission, and other SRA needs.

Save the Dates:

12/8 Advent by Candlelight 5:00pm

12/19 Christmas Potluck, Gift Exchange, and President/Treasurer Elections 7:00pm

For more information, contact ladies@straphaelarchangeLorg or Krissy Sullivan at 314-608-9983.



Saint Raphael the Archangel Ladies' Club

Advent by Candlelight

Sunday, December 8 | 5:00 pm | SRA Gymnasium | 6000 Jamieson Avenue

Advent by Candlelight is an invitation for women to step away from hectic Christmas activities and focus on the inner preparation which is the purpose of the Advent season in readying our hearts and homes to receive the gift of the infant Jesus.



The evening opens with hostesses greeting their guests and general visiting. It continues with a short prayer service, followed by sharing of light appetizers or dessert provided by each hostess for her table and concludes with a guest speaker. This year, we are excited to welcome Jen Ryan as our guest speaker. Jen has a MA degree in Counseling and is a Licensed Professional Counselor. She has worked in lay ecclesial ministry for 17 years as a youth minister, clinical therapist, college campus minister, and parish pastoral associate. Jen currently works at Kenrick-Glennon Seminary as the Director of Pastoral Education and Evangelization.

Please consider being a table hostess and treating your friends, relatives or neighbors to this special event. The duties of a table hostess include reserving a table, inviting up to 7 guests (8 people per table), decorating your table and providing table settings with light appetizers/desserts for your guests. More details will be given to each hostess. We are encouraging hostesses to keep their food very simple to align with our desire to offer a less stressful, more peaceful and enjoyable evening among friends. This is a FREE event, but we will be collecting for a local charity if you would like to contribute that evening.

****NEW**** Please arrive at 4:45pm if you would like extra time to admire the decorated tables before the program begins.

WINTER OUTREACH - A MINISTRY OF MERCY

Encouraged by our Catholic Social Teachings, "Option for the Poor and Vulnerable," many parish communities are committed to making St. Louis Winter Outreach a faith-filled Ministry of Mercy. "As long as you did it to one of these the least of my brethren, you did it to me." MT 25:31-46

As winter approaches, our homeless "brethren" will spend cold days and nights on the streets of St. Louis. In an effort to give them some comfort, we are asking for help in providing meals to an overflow shelter.

DATES: SATURDAYS (1:00pm Dropoff)

December 7

January 11

February 8

Please consider joining our Ministry of Mercy by providing one or more of the following:

9x13" Casserole: meat, fish, veggie, or breakfast

Cookies, cupcakes, breads: (12 to 24 servings)

Prepared food should be baked, frozen, wrapped, and marked. Donations are to be dropped off at Our Lady of Sorrow parking lot at 1:00pm. If needed, other arrangements can be made. For more information or if you would like to share a dish, please contact Mary Ellen Mueller: 314.374.1712 or email maryem@brick.net.

Auction Donation Blitz and Blues Raffle!

**Save the Date: 2025 Black and Gold Auction is Saturday, February 15, 2025!
Please consider donating to the Auction when holiday shopping!**



**Donations brought to the parish office before New Years Day will be entered into a drawing to win four Blues tickets donated by a friend of SRA!
(Mutually agreeable date)**

Check us out at:

“St. Raphael the Archangel Black and Gold Auction”



Donation drop-off at parish office (courtyard entrance) - (314) 352-8100:
Monday-Thursday 7:30 am – 4:00 pm & Friday 7:30 am – 12:00 pm
Please fill out the donation form and raffle ticket form below for any donated items
Forms are available in the parish office
Questions: contact Mark Pfeiffer - auction.st.raphael@gmail.com

Donation Blitz – Blues Raffle Ticket

(Please also submit “Donation Form”)

Name: _____

Email: _____

Phone: _____

Item Donated: _____

Value: _____



Stuckey's Brand Freshly Shelled Nuts

Benefits St. Vincent DePaul of St. Raphael Parish

Name: _____

Address: _____

Phone Number: _____

Qty.	Item	Price Each	Total Cost
	1lb. Mammoth Pecan Halves	\$12.50	
	1lb. Pecan Pieces	\$11.00	
	1lb. Mixed Nuts (toasted/salted fancy pecans, cashews, brazil nuts, hazel nuts & large almonds)	\$11.50	
	1lb. Toasted & Salted Cashews	\$10.50	
	12 oz. Deluxe Praline Pecans	\$10.00	
	1lb. English Walnuts	\$8.50	

Total Amount of Order (Enclosed):

Shelled nutmeats have a shelf life of three months. Freezing is recommended for longer storage of up to two years. An excellent source of protein, fiber, and vitamins! We expect delivery in early December. You will be notified when nuts are available for pickup in the St. Raphael parish office. If you have questions, contact Patti Webers at pwebers.219@yahoo.com or 314-496-8836.

*Please include payment with order.
Checks may be made out to St. Raphael*
Order Deadline: Nov. 30, 2024

Thank you for your support!



Lace up for the 6th Annual Parents vs. Kids Thanksgiving Soccer Game

Who: All ages, all adults, all kids

Where: Busch School Field

When: Thursday, November 28

Meet: 8:00am at the Ruggeri House (5833 Holly Hills Ave.)

Game: 9:00am - Noon

Hot chocolate, adult beverages, and light breakfast items will be provided.

[Welcome to ARCHANGEL YOUTH MINISTRY \(AYM\)](#) covering the parishes of the St. Louis Hills neighborhood (St. Gabriel & St. Raphael). **AYM** is open to all high school teens. No sign-up necessary and teens do not need to be from the St. Louis Hills parishes to participate. High school teens can attend on a regular basis or drop-in as it fits their schedules.

Weekly **Sunday Life Teen Nights** (6:45-8:30pm in Gabriel House) include snacks, socializing, games, talks, and discussions.

Wednesday R&R Nights (7-8:30pm in Gabriel House) are unstructured evenings for teens to hang out (recharge & reconnect). See the AYM calendar for specific dates.

SERVICE HOURS OPPORTUNITY!

***Thursday, December 5, from 6-9:00pm** - We will be babysitting for any moms who want to attend Women at the Well's Advent Gathering in SGA church. Pizza will be provided for teens before the kids arrive at 6:45pm. I need to know how many sitters we'll have so I know how many kids we can take. We will be in Gabriel House utilizing the Notre Dame Chapel and Holy Spirit rooms with different activities in each (similar to what we did last year). Please let me know NOW if you want to help! Contact Youth Minister: Sarah Henderson - hendersons@stgabrielstl.org

LOOKING AHEAD

***April 25 - 27 | Luke 18 Retreat!** | for 8th graders, led by high school teens | Registration and more information to come.

***July 18 - 20 | AYM at Steubenville 2025!** | open to current 8th - 12th grade students | Registration and more information to come.

STAY CONNECTED with AYM

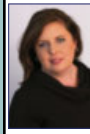
Follow us on Instagram @archangelym; Like our Facebook Group: Archangel Youth Ministry; Join the SGA or SRA Flocknote Group: Youth Ministry; Visit the Youth Group page on the SGA parish website





(314) 481-7333
Since 1927

Bartolino's
Hospitality Group
Bartolino's Bartolino's Bartolino's
Chris Chris
Cook good food & give plenty.
bartolinosrestaurants.com



Jennifer Lueken Delf
Sales Associate
314-323-6073 Cell
314-965-3030 Office
314-965-2858 Fax
jennifer.delf@cbgundaker.com
421 South Kirkwood Road
Kirkwood, MO 63122
jenniferdelf.cbintouch.com
Operated by a subsidiary of NRT LLC.



IMO'S PIZZA
832-9677
5806 Hampton Avenue
CARRY OUTS & DELIVERY

WE'RE HIRING!
AD SALES EXECUTIVES

BE YOURSELF.
BRING YOUR PASSION.
WORK WITH PURPOSE.

- Paid training
- Some travel
- Work-life balance
- Full-Time with benefits
- Serve your community



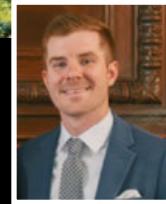
Contact us at
careers@4lpi.com or
www.4lpi.com/careers



Karen Majda
REALTOR® GRI
(314) 574-2560
(314) 353-8888

Wood Brothers Realty
6500 Chippewa St. Fl 1
Saint Louis, MO 63109

keith r manzer
& ASSOCIATES
ESTABLISHED 1983



Cameron Marino
314.809.0583
cameronjamesmarino@gmail.com
keithrmanzer.com
Gladys Manion Inc.
8227 Maryland Ave, Clayton, MO 63105

SUPPORT OUR ADVERTISERS!

SUPPORT OUR ADVERTISERS!



Enjoying life is what it's all about at
Tower Grove Manor
We have garage parking, plus lovely apartments with walk-in closets, full kitchens, and great views of Tower Grove Park and the skyline. More amenities, activities and only minutes from theatres, the Botanical Garden, and the best healthcare.

2710 S. Grand Blvd.
St. Louis, MO 63318
Tel. 314-773-2800
www.towergrovemanager.org

DAVEY

TREE & LAWN CARE EXPERTS SINCE 1880
\$20 OFF
Tree Pruning/Removal/Fertilization
(314) 961-5440 | www.davey.com

- FIELDER - ELECTRICAL SERVICES, INC.
LICENSED • BONDED • INSURED RESIDENTIAL • COMMERCIAL • INDUSTRIAL
Service Upgrades • New Homes • Remodeling • Room Additions • Basements • Kitchens
Bathrooms • Code Violations • Knob & Tube Upgrades • Back Up Generator Systems

\$20 OFF Any Electrical Work of \$100 or more **314-966-3388**

metroStorage express
Climate Control & Drive Up Units Available
No Fees. Gated Facility 24/7 Access
Seniors & Military 10% off
Second Month Free. Closed Circuit Security
metrostoragemo.com
2729 HEREFORD ST. • 314-312-2020
LOCATED ON THE HILL OFF ARSENAL

Paul Karasek Since 1954
BRUNETTI / PESC-CO., INC.
Professional Exterminating Service & Chemical CO.
200 S. Elam
Valley Park, MO 63088
314-487-2208 1-888-220-BUGS

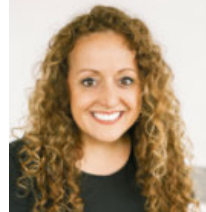
ROSATI-KAIN ACADEMY
Catholic. All-Girls. College-Prep.

APPLY NOW

Educating women to lead
and serve the world!

www.rosati-kain.org / 4389 Lindell Blvd, St. Louis, MO 63108

ANNA GARCIA
garcia PROPERTIES
cell 314.973.3319 • www.garciasll.com
anna@garciaproperties.com



OPEN EVERY DAY FOR DINE IN & PICK UP



314.436.3742
Sun - Thurs: 11am - 10:30pm
Fri - Sat: 11am - 1:30am
1711 South 9th Street

Bieg
PLUMBING COMPANY
Commercial & Residential
(314) 487-4564

GRAVOIS GLASS
Residential & Commercial
GLASS REPLACEMENT
Most Insulated Units in 24 Hours
Mirrors • Table Tops
Insulated Glass • Window Parts • Safety Glass
314-352-2200 | gravoisglass@aol.com
6825 Gravois Ave. St. Louis 63116



For ad info. call 1-800-950-9952 • www.4lpi.com St Raphael the Archangel - Saint Louis, MO

B 4C 01-1608

Scott R. Holdridge, Agent
Call or Email me Today!
Bus: 314-664-5433
 scott@scottholdridge.com
 scottholdridge.net

I can help you with your Insurance, Banking and Financial Services Needs



HOFFMEISTER COLONIAL MORTUARY
Helping people is our business.

Conveniently located at
 6464 Chippewa in St. Louis Hills



www.hoffmeistercolonial.com • 314.832.7770



Judy McNamara
 3304 Watson Road
 St Louis, MO 63139
 314-781-2290

www.judymcnamara.com

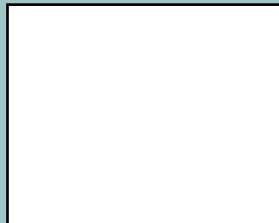
Place Your Ad Here and Support our Parish!

Instantly create and purchase an ad with

AD CREATOR STUDIO



4lpi.com/adcreator



SHORT STAFFED?

Place an ad here to find new local talent for your business.



CALL
 800-950-9952

SOUTH SIDE HARDWARE

Good Neighbors, Good Advice

Steve, Brian, Sean, Gary, & Allison
 6401 Hampton Avenue, St. Louis, MO 63109
southsidetruevaluehardware@gmail.com

SouthsideHardware.com 314-351-0204

RON'S PLUMBING
 Ron Elking
 Specializing In Older Home Repairs

314-752-1101

St. Louis, MO

SARACINO
Dr. Catherine Saracino
 DMD, MSD, MS
ORTHODONTIST
 Braces • Invisalign • Whitening
 314.649.8999 | Saracinoorthodontics.com
 6555 Chippewa St., Suite 200
 St. Louis, MO 63109



Religious Gifts, Books & Church Supplies Since 1960

ST. LOUIS HILLS
 6759 Chippewa St
 St. Louis, MO 63109
 (314) 644-0643

O'FALLON MO
 2985 Hwy K (at Hwy N)
 O'Fallon, MO 63368
 (636) 379-3705

catholicsupply.com

FREE AD DESIGN
 with purchase of this space
CALL
 800-950-9952

DOES YOUR NONPROFIT ORGANIZATION NEED A NEWSLETTER?

Engaging, ad-supported print and digital newsletters to reach your community.



Scan to contact us!

Visit lpicomunities.com

JAMES LEGRAND
 4414 Donovan
 314-353-6128
legrandsmarket-catering.com
LeGrands Market & Catering



**Fertilization
 Weed Control
 Aeration
 Seeding**

loyaltylawnare.com (636) 306-3671

IF YOU LIVE ALONE

MDMedAlert!™ As Low As **\$19⁹⁵** /mo.
 ✓ Ambulance ✓ Police/Fire
 ✓ Family/Friends ✓ GPS & Fall Alert

CALL NOW! 800.808.9294

md-medalert.com



Celebrate life with faith and friends at The Sarah Community!

12284 DePaul Drive
 Bridgeton, MO 63044
 314-209-7000

TheSarahCommunity.com | [TheSarahCommunity](https://www.facebook.com/TheSarahCommunity)

LET'S GROW YOUR BUSINESS
 Place Your Ad Here and Support Our Parish!

CONTACT ME
Iris Mitchell

imitchell@4LPi.com
 (800) 950-9952 x2495

Kutis FUNERAL HOME

2906 GRAVOIS
 772-3000

10151 GRAVOIS
 842-4458

5255 LEMAY FERRY
 894-4500

Come See the New Ford Car Deals in St. Louis



Mon, Wed, Fri: 8:30am-8pm
 Tues, Thurs: 8:30am-6pm
 Sat: 9am-5pm
 3300 South Kingshighway
 St. Louis, MO 63139
314-664-4100



KITTNER
 REAL ESTATE GROUP

angelakittner.com | 314-775-2745



For ad info. call 1-800-950-9952 • www.4lpi.com

St Raphael the Archangel - Saint Louis, MO

A 4C 01-1608